

NICU and CCT Examples





AEVE





AEVE





AEVE





PM 3:16 SEP/25/2017

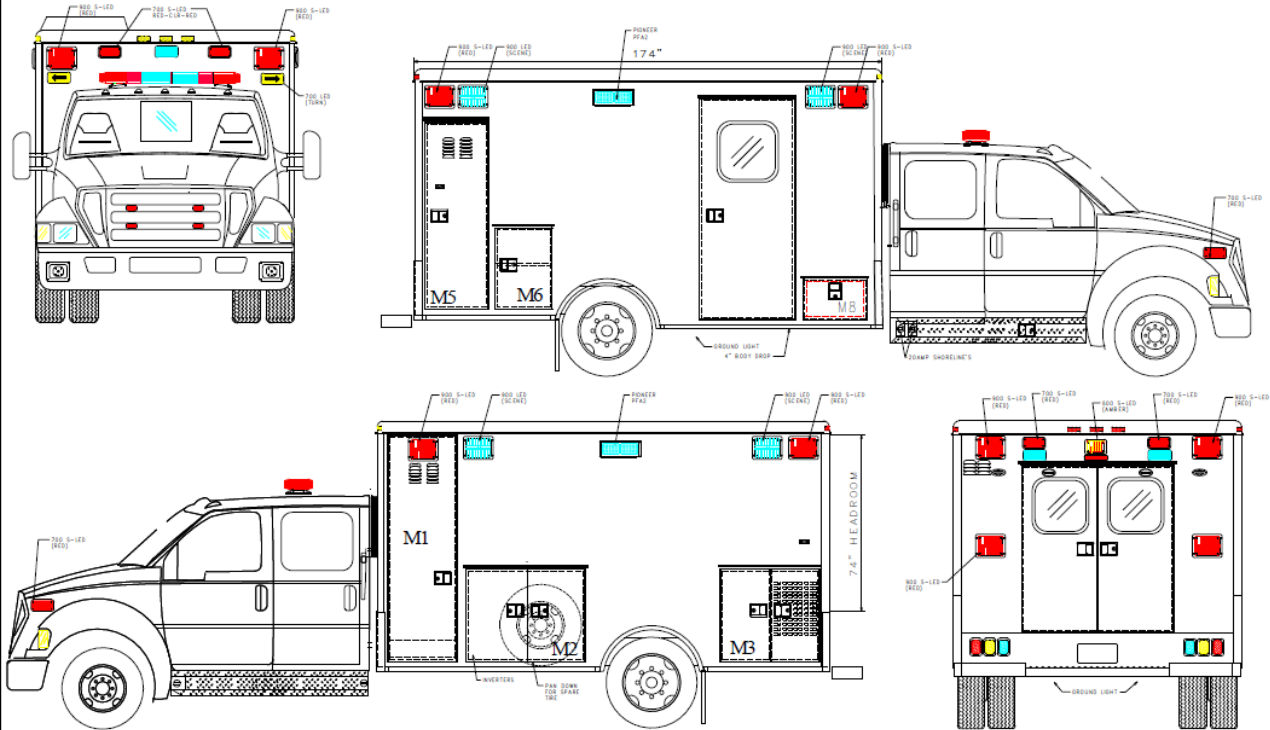


PM 3:16 SEP/25/2017

AEVE



CONCEPTIONAL DRAWINGS ONLY: DRAWINGS ARE NOT TO SCALE, ALL MEASURES ARE APPROXIMATE & SUBJECT TO ENGINEERING CHANGE



Compartment Dimensions			
Comp	Height	Width	Depth
M1	84.8"	20"	20.5"
M2	36.75"	46.8"	20.5"
M3	36.75"	34.1"	20.5"
M4	81.0"	20"	14"
M5	18.5"	15.5"	20.5"
M7	N/A	N/A	N/A
M8	16.25"	18.5"	21"
C/S Access	82.8"	31"	N/A
Rear Access	60-5/8"	48-3/4"	N/A

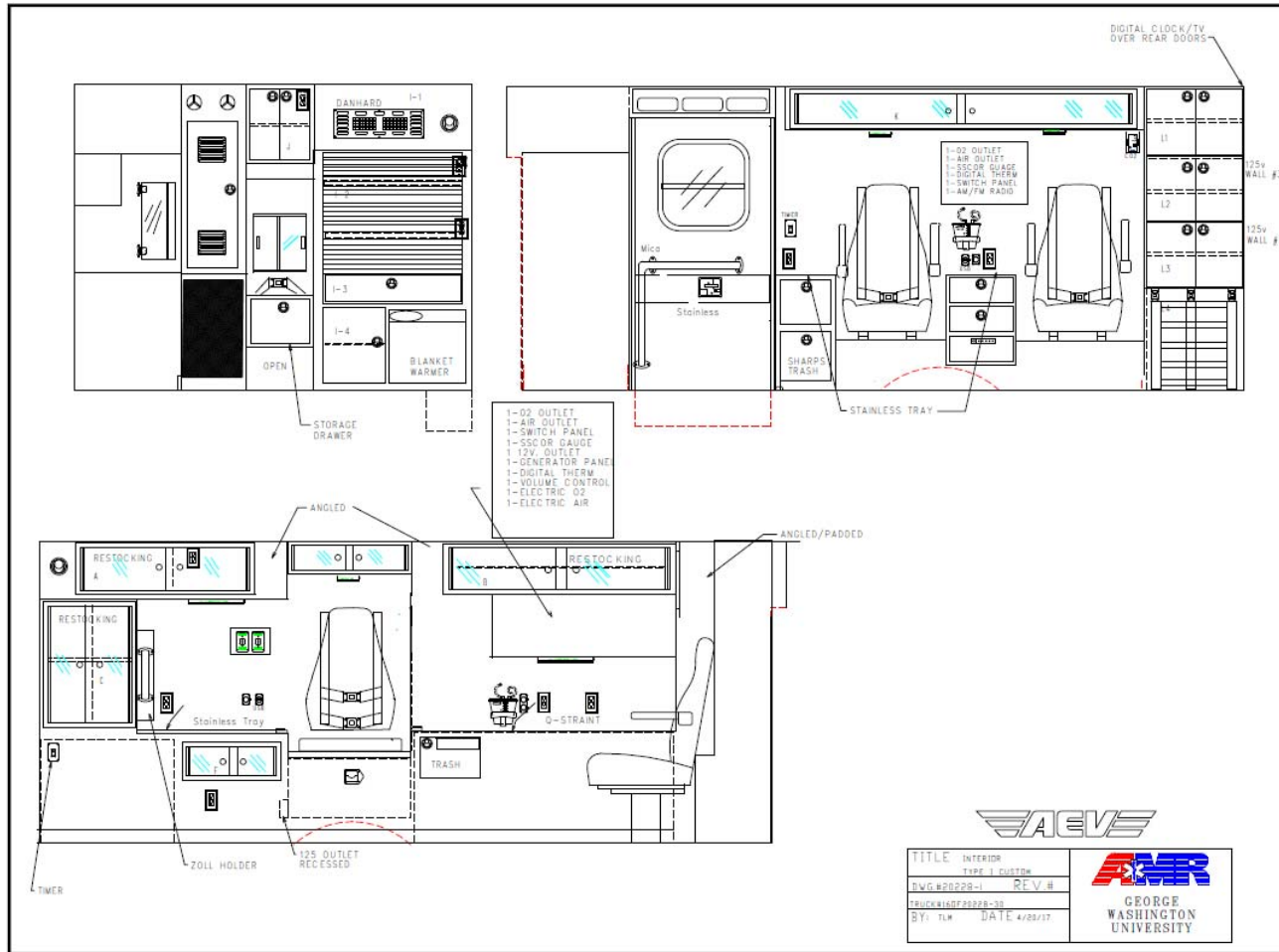
* Does not include
 ** Due to OEM's supply requirements, drawings may change

AEVE
 AMERICAN EMERGENCY VEHICLES

TITLE	Exterior F650
HWG #22039	REV #0
TRUCK #17MF22039	
BY TLM	DATE 2/8/18
BODY # 11271	

AER
 GEORGE WASHINGTON UNIVERSITY





TITLE	INTERIOR	 GEORGE WASHINGTON UNIVERSITY
	TYPE I CUSTOM	
BVG #00228-11	REV #	
TRUCK #160F200PB-30		
BY: TLM	DATE 4/28/17	





AEVE





AEVE





AEVE

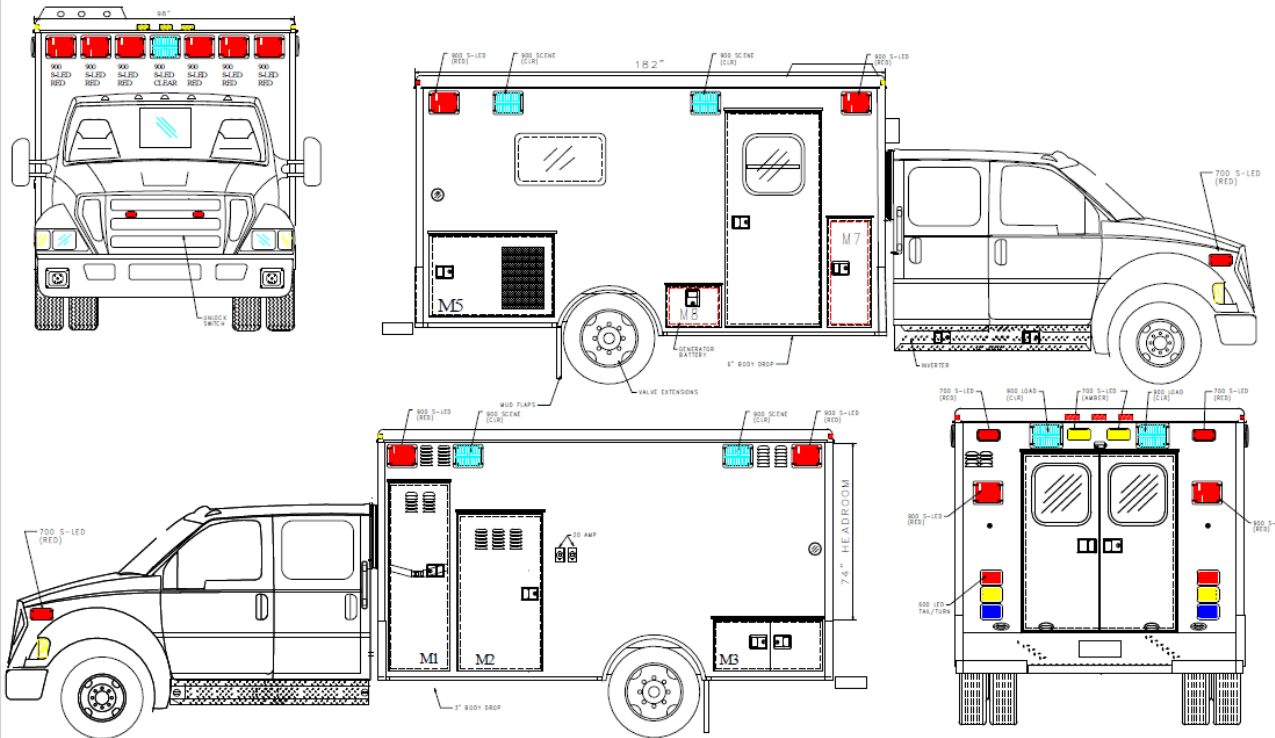




AEVE



CONCEPTIONAL DRAWINGS ONLY: DRAWINGS ARE NOT TO SCALE, ALL MEASURES ARE APPROXIMATE & SUBJECT TO ENGINEERING CHANGE



Compartment Dimensions			
Comp	Height	Width	Depth
M1	76"	18.25"	7"
M2	65"	23"	21"
M3	15"	47"	23"
M5	29.5"	34.25"	20"
M7	40"	32"	21"
M8	15.5"	21.5"	20"
C/S Access	85"	31"	N/A
Rear Access	64-5/8"	46-3/4"	N/A

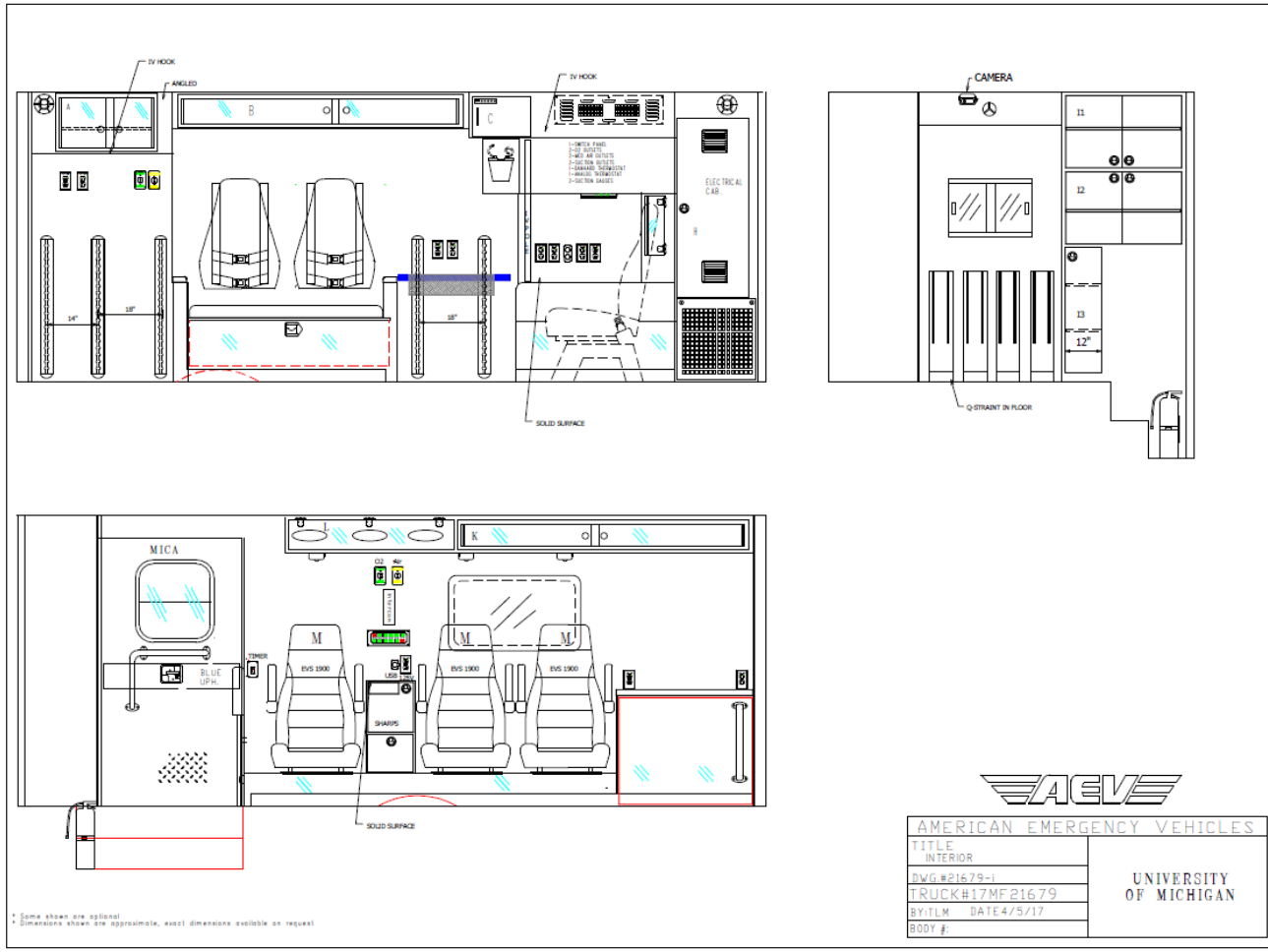
2. Don't forget to check for proper operation, storage or charge.

AEVE

AMERICAN EMERGENCY VEHICLES

TITLE	Exterior F650	UNIVERSITY OF MICHIGAN
DWG #	21679 REV #0	
TRUCK #	17MF21679	
BY/ILM	DATE 4/11/17	
BODY # 10775		







AM 7:03 JUL/29/2017



AM 7:02 JUL/29/2017

AEVE





AEVE





AM 7:04 JUL/29/2017

AEVE



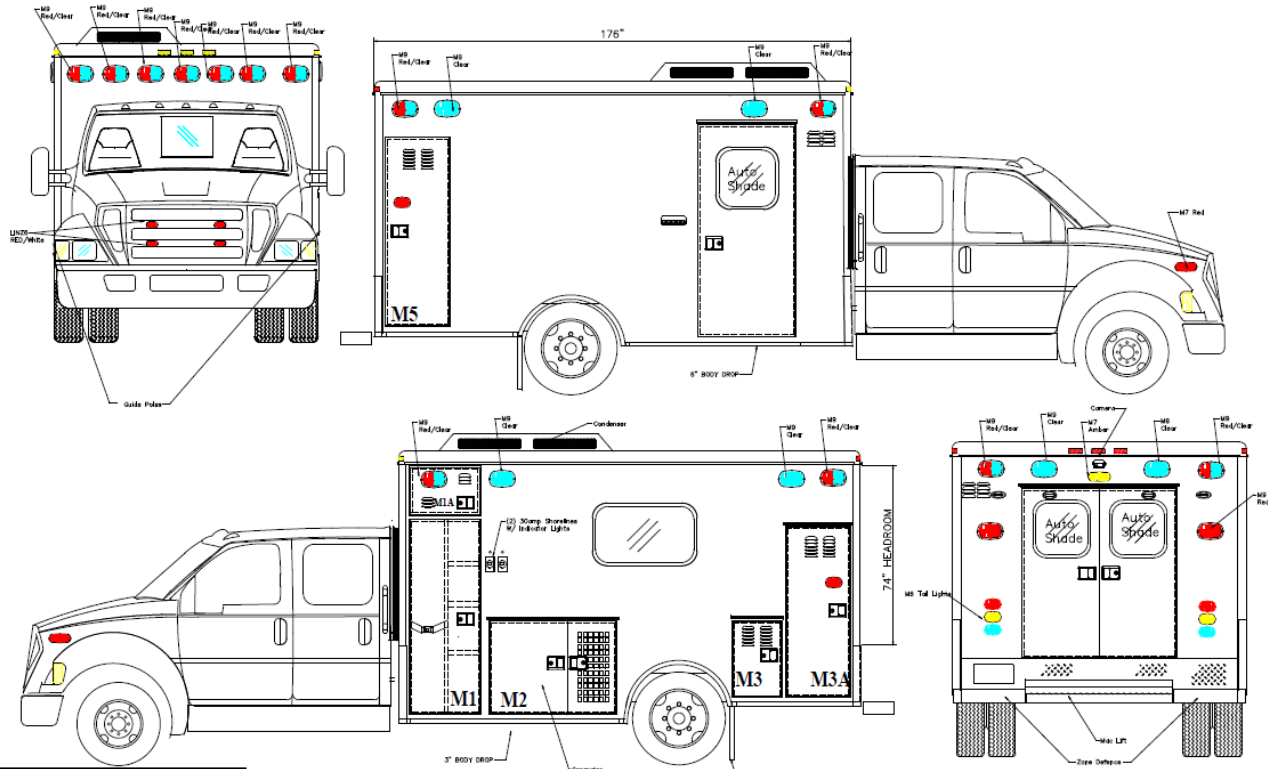


AM 7:04 JUL/29/2017

AEVE



CONCEPTUAL DRAWINGS ONLY: DRAWINGS ARE NOT TO SCALE, ALL MEASURES ARE APPROXIMATE & SUBJECT TO ENGINEERING CHANGE




Compartment Dimensions			
Comp	Height	Width	Depth
M1	66.5"	24.88"	19.5"
M1A	17.56"	24.88"	19.5"
M2	29.5"	44.1"	19.5"
M3	26.5"	18"	19.5"
M3A	66.5"	19"	19.5"
M5	66.5"	19"	19.5"
M7	N/A	N/A	N/A
M8	N/A	N/A	N/A
C/S Access	80.7"	31"	N/A
Rear Access	60-5/8"	46-3/4"	N/A

* From floor to ceiling
 * Call to AEMV for lighting requirements, drawings and details.

AEMV

AMERICAN EMERGENCY VEHICLES

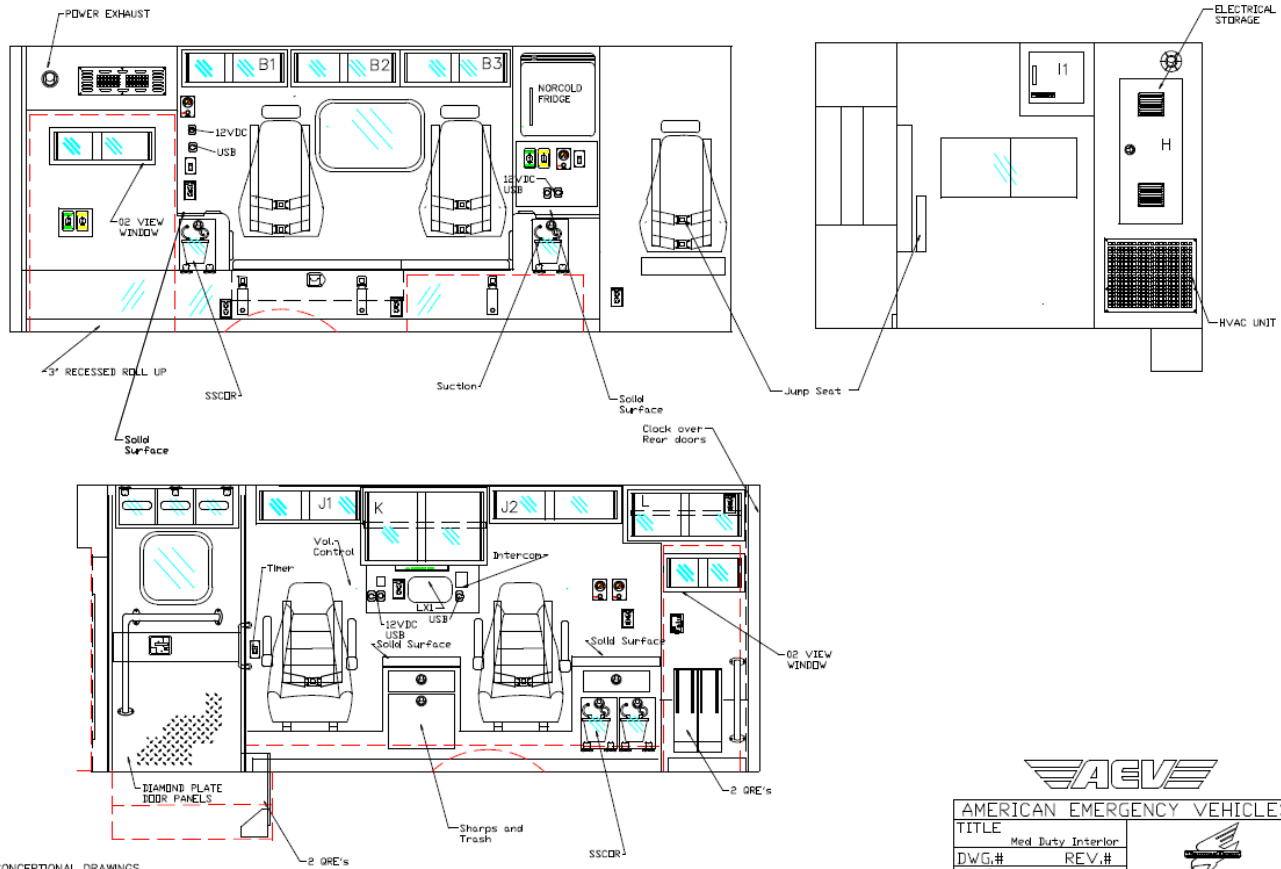
TITLE	Exterior F650
DWG.#21289E	REV.#0
TRUCK#17MF21289	
BY:JBC	DATE:7-24-17
BODY # 10714	



MRNTP



CONCEPTUAL DRAWINGS ONLY: DRAWINGS ARE NOT TO SCALE, ALL MEASURES ARE APPROXIMATE & SUBJECT TO ENGINEERING CHANGE



*CONCEPTUAL DRAWINGS
 • Some shown are optional
 • Due to AEV's ongoing improvements, drawings can change.



AMERICAN EMERGENCY VEHICLES	
TITLE	Med Duty Interior
DWG.#	REV.#
TRUCK#	
BY:JBC	DATE:7-24-17





AEVE





AM 9:47 APR/ 9/2018



AM 9:45 APR/ 9/2018

AEVE





AEVE

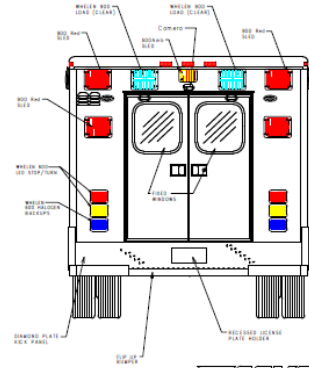
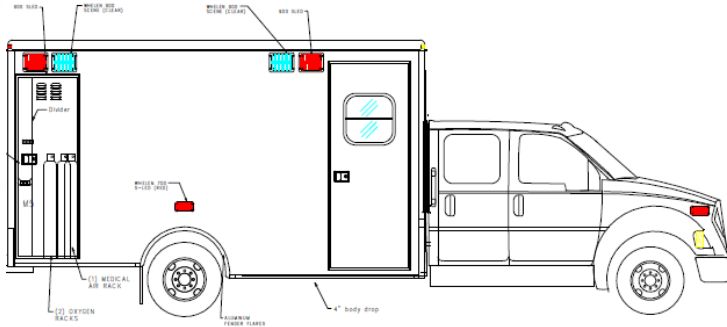
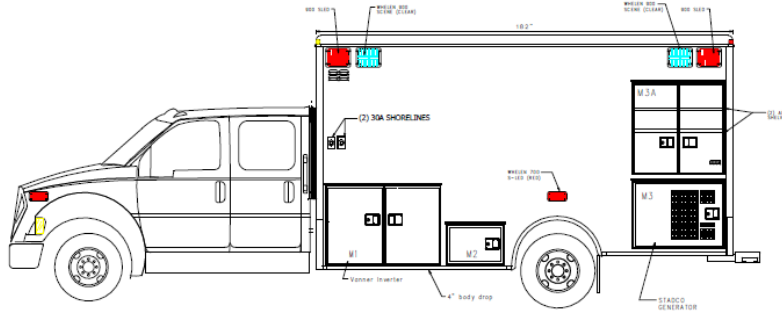
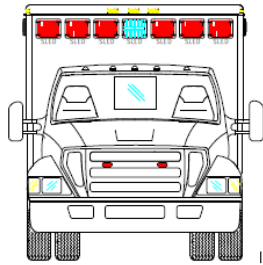




AEVE



CONCEPTUAL DRAWINGS ONLY: DRAWINGS ARE NOT TO SCALE, ALL MEASURES ARE APPROXIMATE & SUBJECT TO ENGINEERING CHANGE

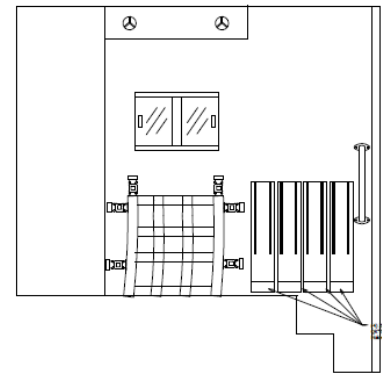
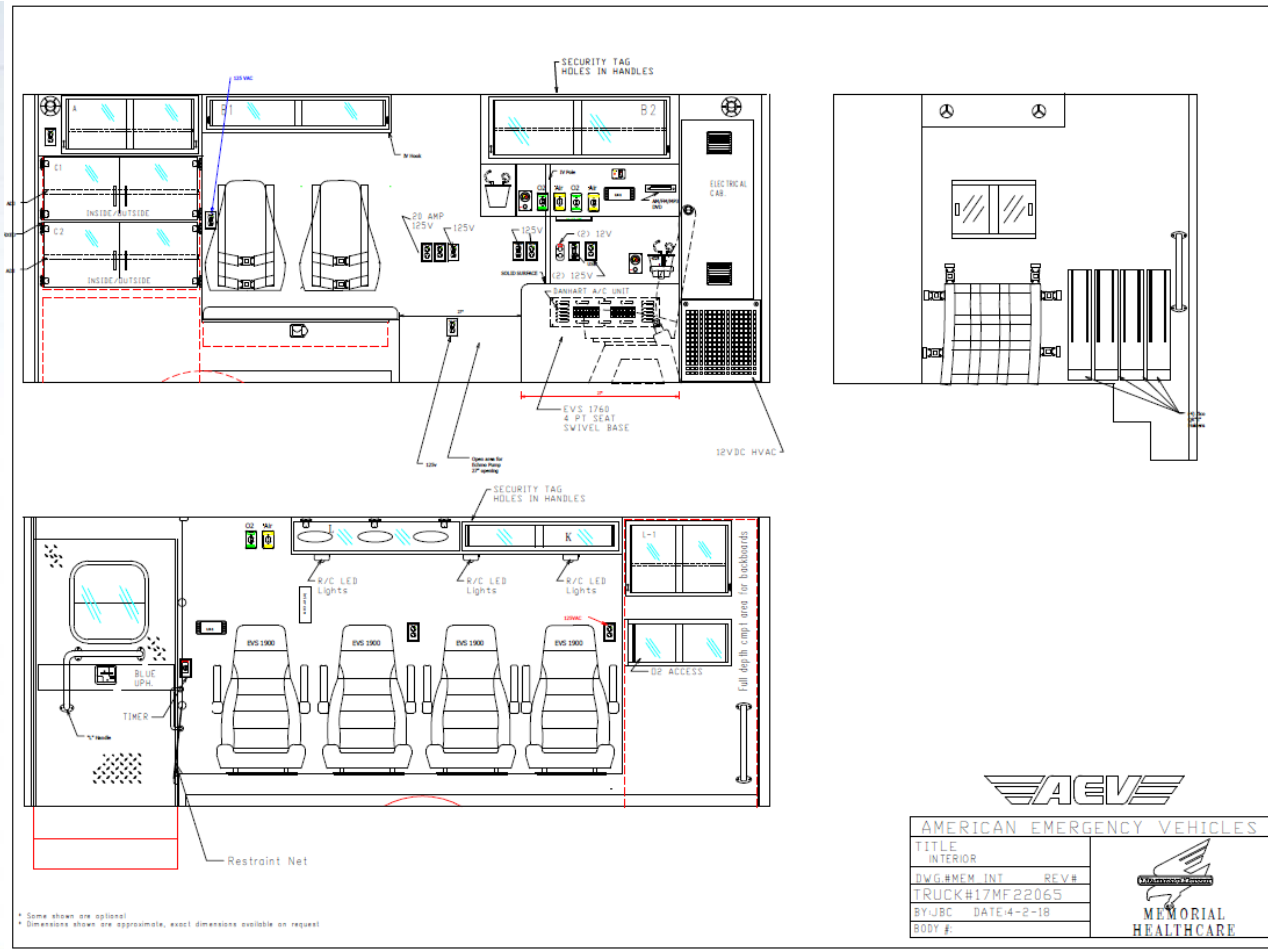


Interior Dimensions		
Height	Width	Depth
31.6	48"	20
14.25	29"	20
29.5	34.125	19.5
32.25	34.125	20.5
72"	29"	20"
N/A	N/A	N/A
82.8	31"	N/A
100-5/8	10-5/4"	N/A

CONCEPTUAL DRAWINGS
 * Some items are optional
 ** Due to AEMV's ongoing improvements, drawings can change.

AEVE
 AMERICAN EMERGENCY VEHICLES
 TITLE: Type 1, 180' Exterior
 Dwg. # MEM-EXT-RT-V-80
 REV. # 1/19/2015
 BY: JBT
 BODY #: 11153
MEMORIAL HEALTHCARE





AMERICAN EMERGENCY VEHICLES	
TITLE	
INTERIOR	
DWG # MEM_INT	REV #
TRUCK # 17MF22065	
BY JBC	DATE 4-2-19
BODY #	





AEVE





AEVE





AEVE

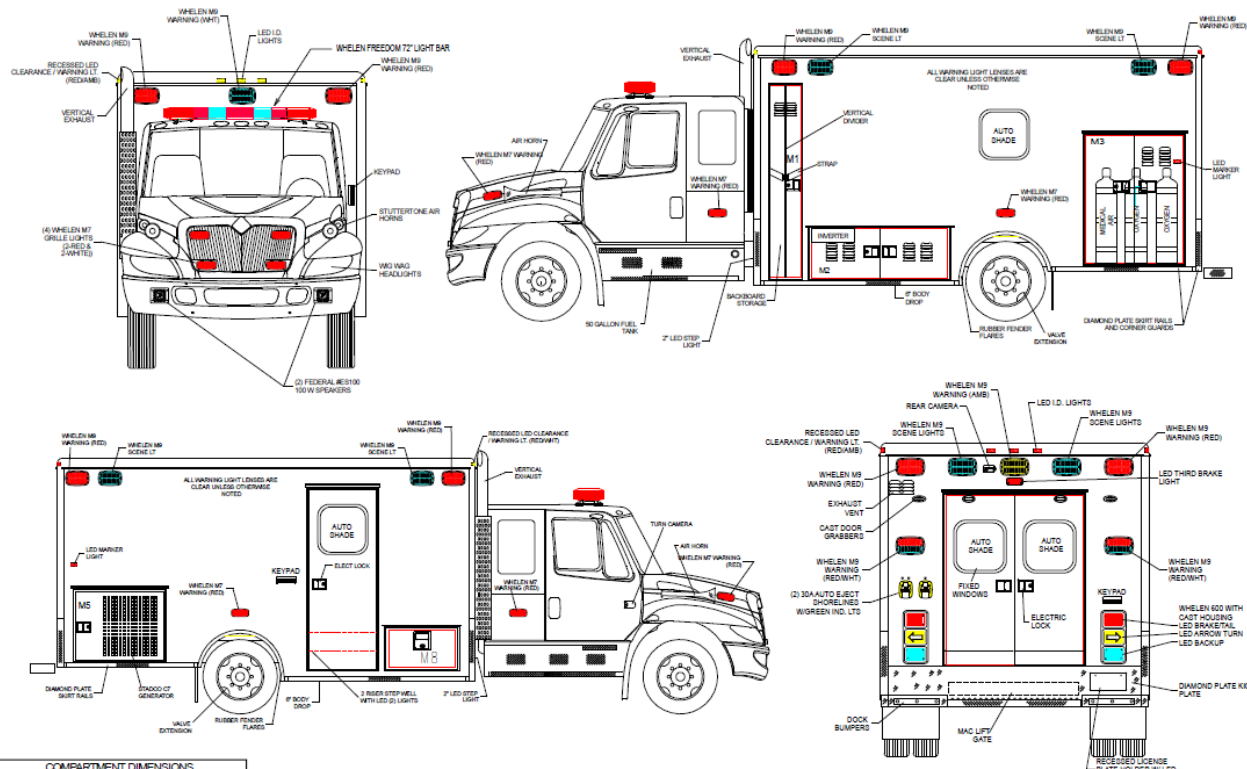




AEVE



CONCEPTIONAL DRAWING ONLY: DRAWINGS ARE NOT TO SCALE, ALL MEASURES ARE APPROXIMATE & SUBJECT TO ENGINEERING CHANGE



COMPARTMENT DIMENSIONS			
Compartment	Height	Width	Depth
M1	80	10.5	10.5
M1A	N/A	N/A	N/A
M2	20	60	21
M2.5	N/A	N/A	N/A
M3	52	36	10
M5	32	35	19.5
M6	N/A	N/A	N/A
M8	20	39.375	20
C/S Access	82.8	31	N/A
Rear Access	46.75	60.6	N/A

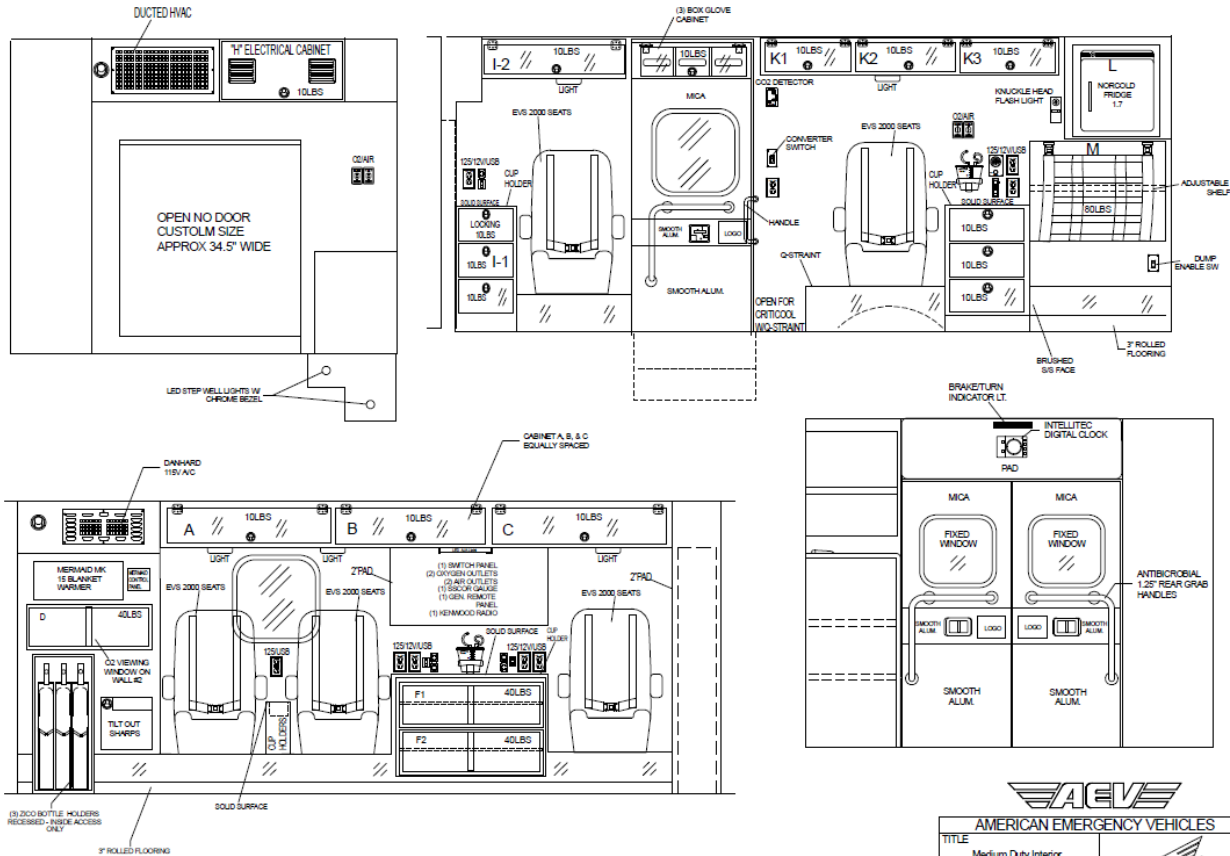
*CONCEPTIONAL DRAWINGS
 *Some items shown are optional
 *Due to AEV's ongoing improvements, drawings can change



TITLE
 Freightliner M2 Exterior
 DWG# 22843-E REV.
 TRUCK# 18MN 22843
 BY: MDB DATE: 11-20-17
 BODY #: 11209



CONCEPTIONAL DRAWING ONLY: DRAWINGS ARE NOT TO SCALE, ALL MEASURES ARE APPROXIMATE & SUBJECT TO ENGINEERING CHANGE



*CONCEPTIONAL DRAWINGS
 *Some items shown are optional
 *Due to AEV's ongoing improvements, drawings can change

AEVE
 AMERICAN EMERGENCY VEHICLES

TITLE	Medium Duty Interior
DWG #	22843-I
TRUCK#	18MN 22843
BY:	MOB
DATE:	3-28-18

SHANDSCAIR





AEVE





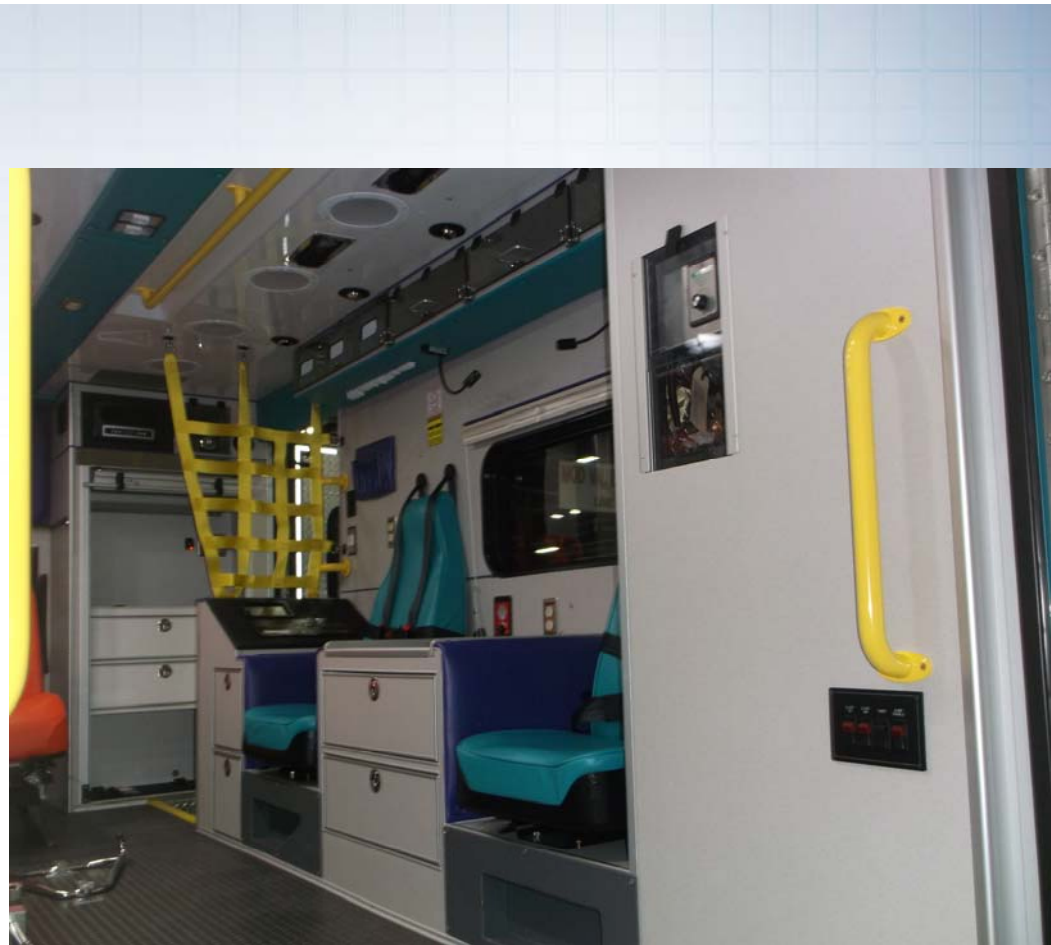
AEVE





AEVE

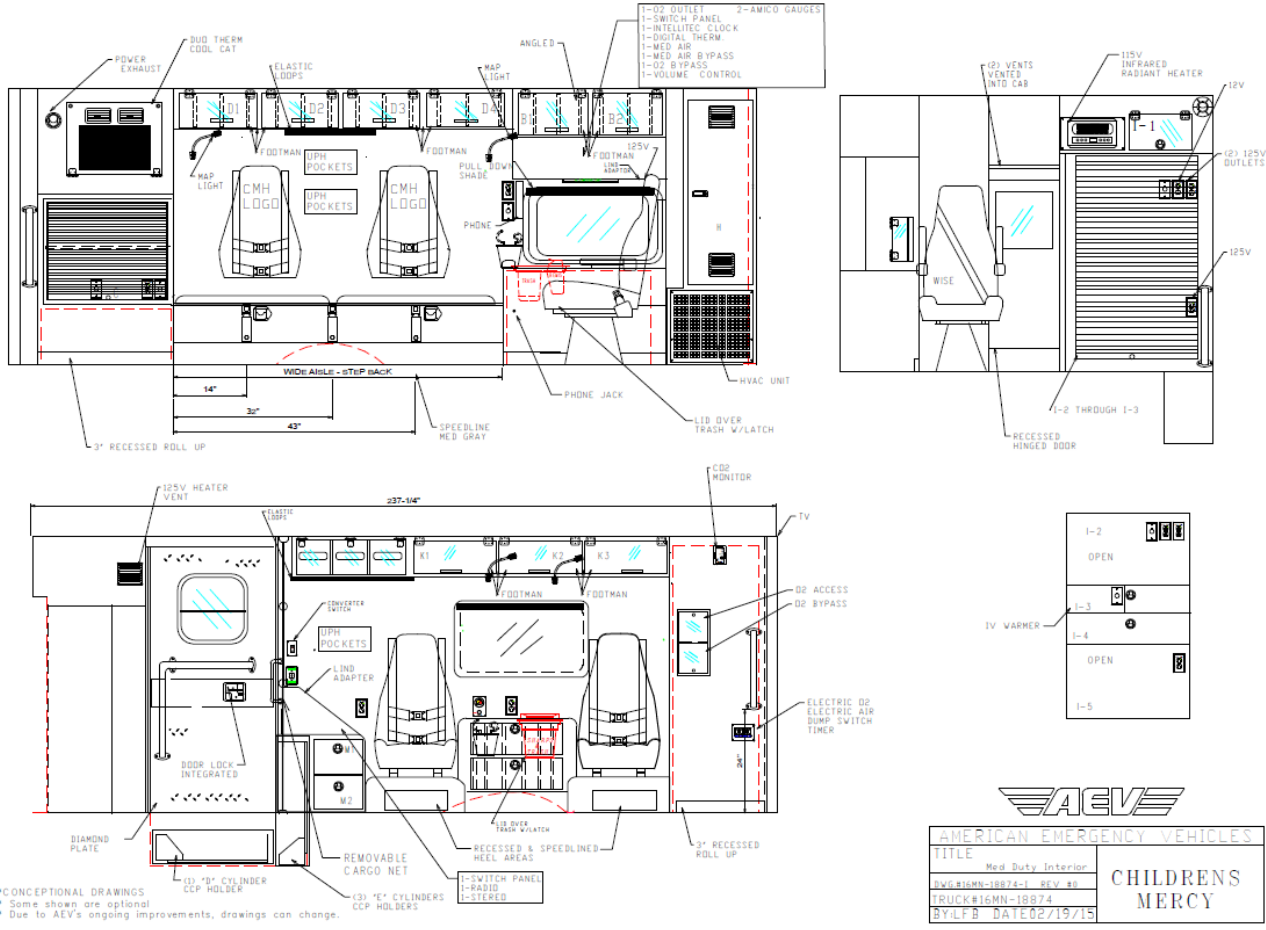




AEVE



CONCEPTIONAL DRAWINGS ONLY: DRAWINGS ARE NOT TO SCALE, ALL MEASURES ARE APPROXIMATE & SUBJECT TO ENGINEERING CHANGE



AMERICAN EMERGENCY VEHICLES	
TITLE	Med Duty Interior
	Byg#16MN-18874-1 REV #0
	TRUCK#16MN-18874
	BYLFB DATE 02/19/15
	CHILDRENS MERCY





AEVE





AEVE





AEVE

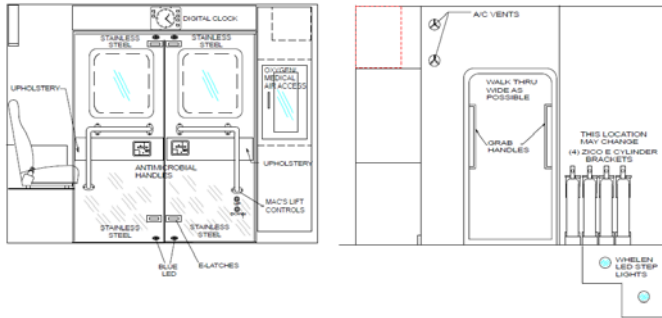




AEVE



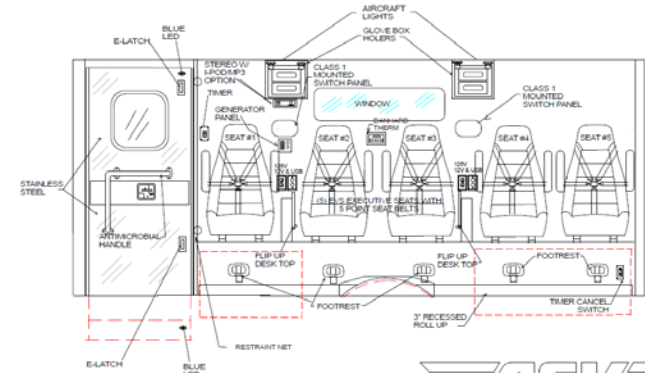
CONCEPTUAL DRAWINGS ONLY: DRAWINGS ARE NOT TO SCALE, ALL MEASURES ARE APPROXIMATE & SUBJECT TO ENGINEERING CHANGE



AMERICAN EMERGENCY VEHICLES		WINNIE PALMER HOSPITAL
TITLE	Navigator Interior	
BY:MDB		
DATE	10/12/15	

* Some shows are optional
 * Due to AEV's ongoing improvements, drawings can change.

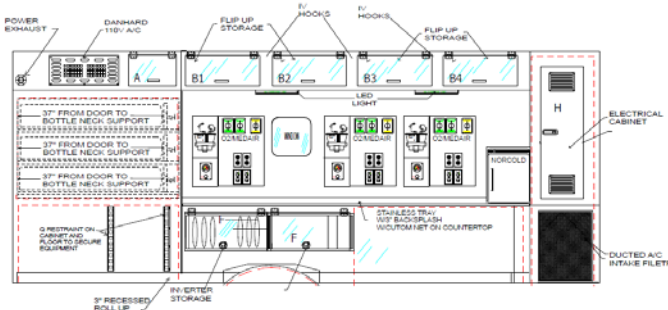
CONCEPTUAL DRAWINGS ONLY: DRAWINGS ARE NOT TO SCALE, ALL MEASURES ARE APPROXIMATE & SUBJECT TO ENGINEERING CHANGE



AMERICAN EMERGENCY VEHICLES		WINNIE PALMER HOSPITAL
TITLE	Navigator Interior	
TRUCK#	164WN19792 REV#1	
BY:MDB		
DATE	4-14-16	

* Some shows are optional
 * Due to AEV's ongoing improvements, drawings can change.

CONCEPTUAL DRAWINGS ONLY: DRAWINGS ARE NOT TO SCALE, ALL MEASURES ARE APPROXIMATE & SUBJECT TO ENGINEERING CHANGE



AMERICAN EMERGENCY VEHICLES		WINNIE PALMER HOSPITAL
TITLE	Navigator Interior	
TRUCK#	164WN19792 REV#1	
BY:MDB		
DATE	5-5-16	

* Some shows are optional
 * Due to AEV's ongoing improvements, drawings can change.





AEVE





AEVE





PMT2.42 OCT/ 1/2017

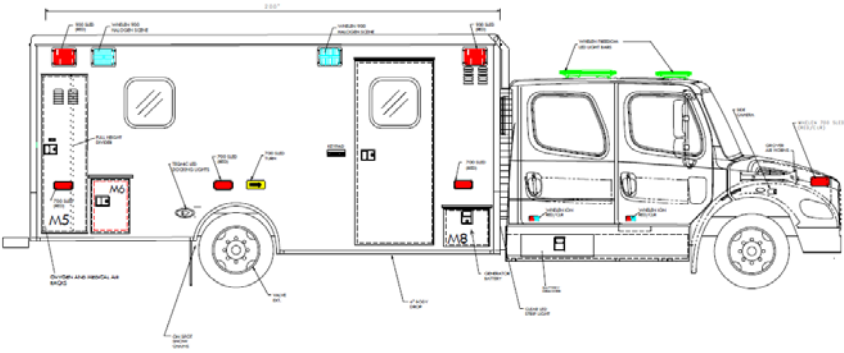




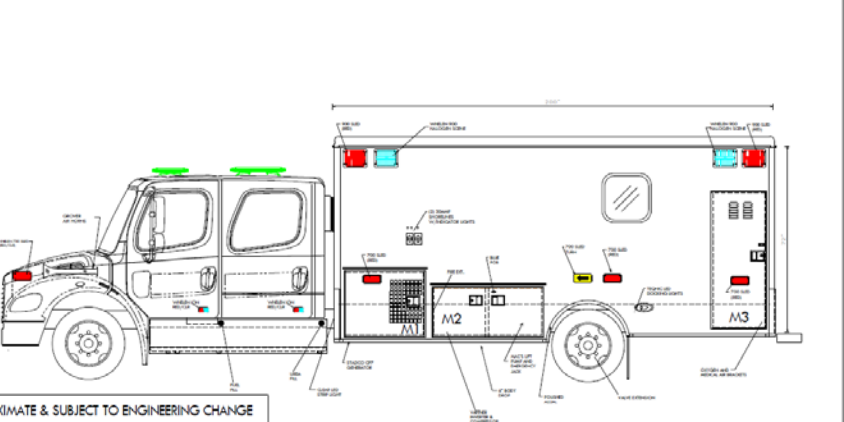
AEVE



CONCEPTUAL DRAWINGS ONLY: DRAWINGS ARE NOT TO SCALE, ALL MEASURES ARE APPROXIMATE & SUBJECT TO ENGINEERING CHANGE



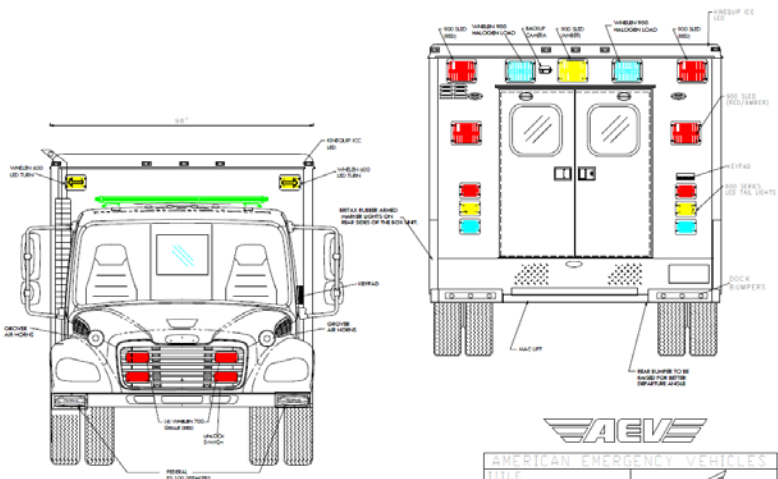
CONCEPTUAL DRAWINGS ONLY: DRAWINGS ARE NOT TO SCALE, ALL MEASURES ARE APPROXIMATE & SUBJECT TO ENGINEERING CHANGE



*CONCEPTUAL DRAWINGS
 * Some shown are optional
 * Due to AVE's ongoing improvements, drawings can change.

Compartment Dimensions			
Comp	Height	Width	Depth
M1	22.5"	12.25"	10"
M2	24.5"	4.4"	21"
M3	50"	7.4"	17"
M4	18.5"	7.8"	17"
M5	18.5"	12.5"	17"
M6	10"	14.25"	17"
M7	10"	14.25"	17"
M8 Access	55"	31"	3/4"
REAR Access	43.5/8"	44.5/8"	3/4"

CONCEPTUAL DRAWINGS ONLY: DRAWINGS ARE NOT TO SCALE, ALL MEASURES ARE APPROXIMATE & SUBJECT TO ENGINEERING CHANGE



Compartment Dimensions			
Comp	Height	Width	Depth
M1	22.5"	12.25"	10"
M2	24.5"	4.4"	21"
M3	50"	7.4"	17"
M4	18.5"	7.8"	17"
M5	18.5"	12.5"	17"
M6	10"	14.25"	17"
M7	10"	14.25"	17"
M8 Access	55"	31"	3/4"
REAR Access	43.5/8"	44.5/8"	3/4"

*CONCEPTUAL DRAWINGS
 * Some shown are optional
 * Due to AVE's ongoing improvements, drawings can change.

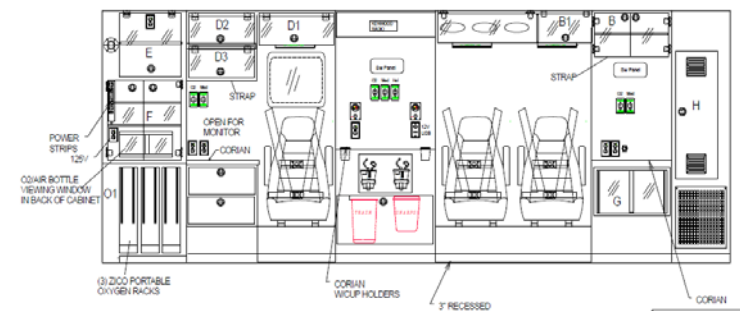
American Emergency Vehicles

TITLE: Freightliner M2 Exterior
 VIN: 4R481789-F 00141
 CONFIGURATION: 21794
 BYNDB DATE: 6-21-17
 BODY #10820

ST JOSEPH'S CHILDREN'S HOSPITAL



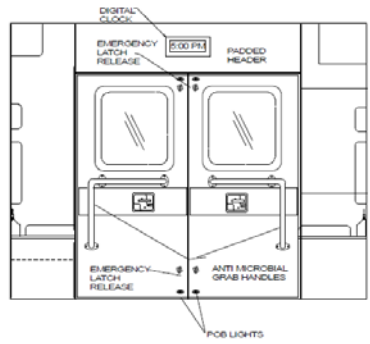
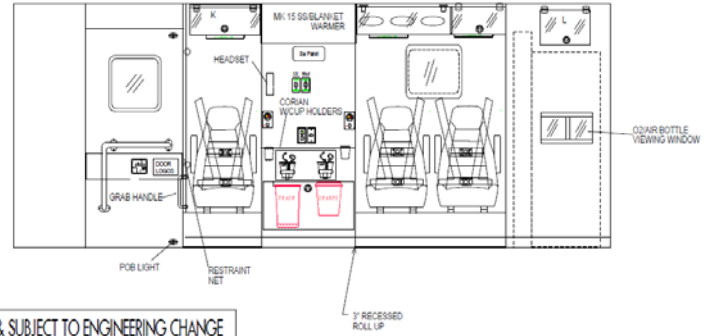
CONCEPTUAL DRAWINGS ONLY: DRAWINGS ARE NOT TO SCALE, ALL MEASURES ARE APPROXIMATE & SUBJECT TO ENGINEERING CHANGE



* CONCEPTUAL DRAWINGS
 * Some shown are optional
 * Due to AEV's ongoing improvements, drawings can change.

AMERICAN
TITLE
Type Med. 200, S1
DWG #21789-1 0
TRUCK #18M1 2
BYMDD DATE 6-7-17

CONCEPTUAL DRAWINGS ONLY: DRAWINGS ARE NOT TO SCALE, ALL MEASURES ARE APPROXIMATE & SUBJECT TO ENGINEERING CHANGE

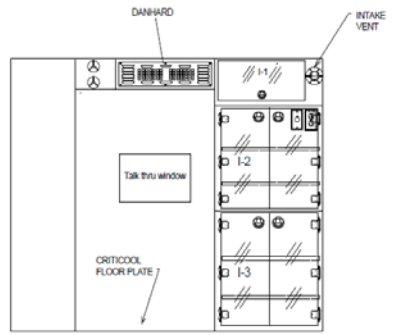


1 change.

AMERICAN EMERGENCY VEHICLES
TITLE
Type Med. 200, CURBSIDE
DWG #21789-1 01 V1
TRUCK #18M1 21789
BYMDD DATE 6-7-17

ST JOSEPH'S CHILDREN'S HOSPITAL

CONCEPTUAL DRAWINGS ONLY: DRAWINGS ARE NOT TO SCALE, ALL MEASURES ARE APPROXIMATE & SUBJECT TO ENGINEERING CHANGE



* CONCEPTUAL DRAWINGS
 * Some shown are optional
 * Due to AEV's ongoing improvements, drawings can change.

AMERICAN EMERGENCY VEHICLES
TITLE
Type Med. 200, FRI/REAR
DWG #21789-1 02 V1
TRUCK #18M1 21789
BYMDD DATE 6-31-17

ST JOSEPH'S CHILDREN'S HOSPITAL





AEVE





AEVE





14/09/2016

AEVE

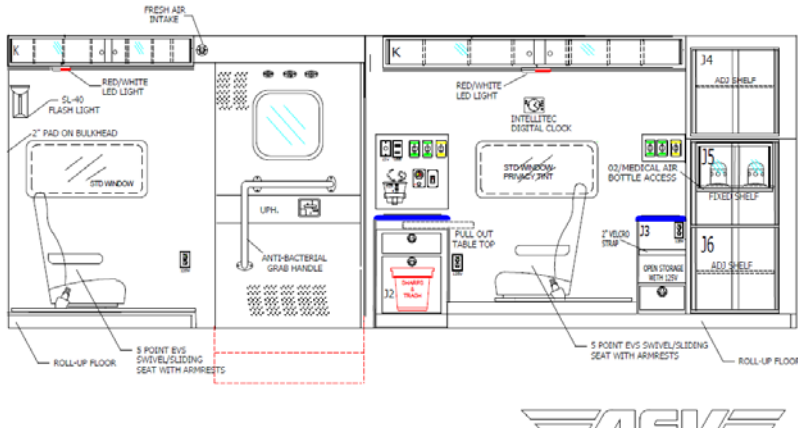




AEVE

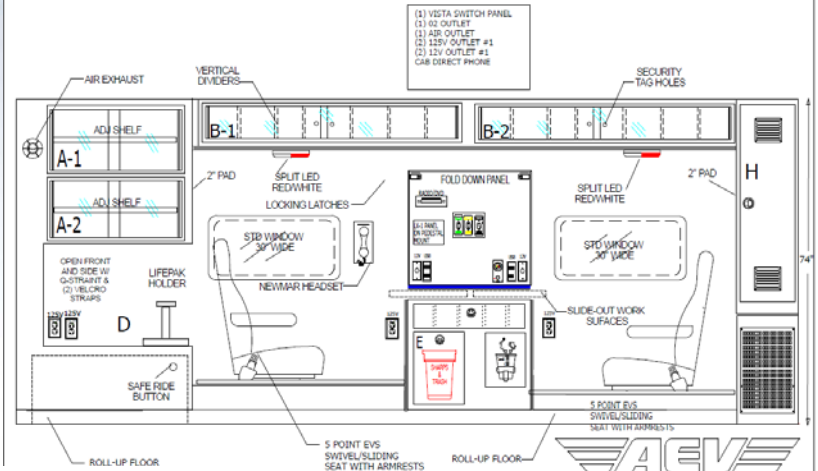


CONCEPTUAL DRAWINGS ONLY. DRAWINGS ARE NOT TO SCALE. ALL MEASURES ARE APPROXIMATE & SUBJECT TO ENGINEERING CHANGE



* CONCEPTUAL DRAWINGS
 * Some shown are optional
 * Due to AEV's ongoing improvements, drawings can change.

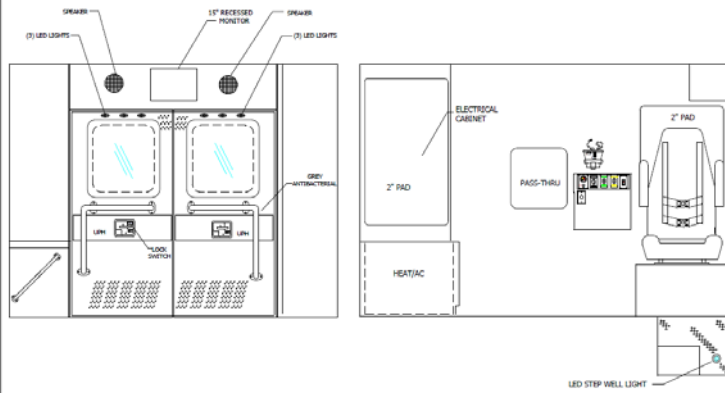
CONCEPTUAL DRAWINGS ONLY. DRAWINGS ARE NOT TO SCALE. ALL MEASURES ARE APPROXIMATE & SUBJECT TO ENGINEERING CHANGE



- (1) VISTA SWITCH PANEL
- (2) 60 OUTLET
- (3) AIR OUTLET
- (4) 120V OUTLET #1
- (5) 120V OUTLET #2
- (6) CAB DIRECT PHONE

AEVE
 AMERICAN EMERGENCY VEHICLES
 Interior S/S
 DWG.#20097-1
 TRUCK#16MK20097
 BY: MDB DATE: 8-3-16 ALL CHILDRENS HOSPITAL

CONCEPTUAL DRAWINGS ONLY. DRAWINGS ARE NOT TO SCALE. ALL MEASURES ARE APPROXIMATE & SUBJECT TO ENGINEERING CHANGE



AEVE
 AMERICAN EMERGENCY VEHICLES
 FRONT/REAR INTERIOR
 DWG.# 20097-1
 TRUCK#16MK20097
 BY: MDB DATE: 8-3-16 ALL CHILDRENS HOSPITAL

* CONCEPTUAL DRAWINGS
 * Some shown are optional
 * Due to AEV's ongoing improvements, drawings can change.





PM 4:19 NOV/ 9/2017

AEVE





AEVE





AEVE

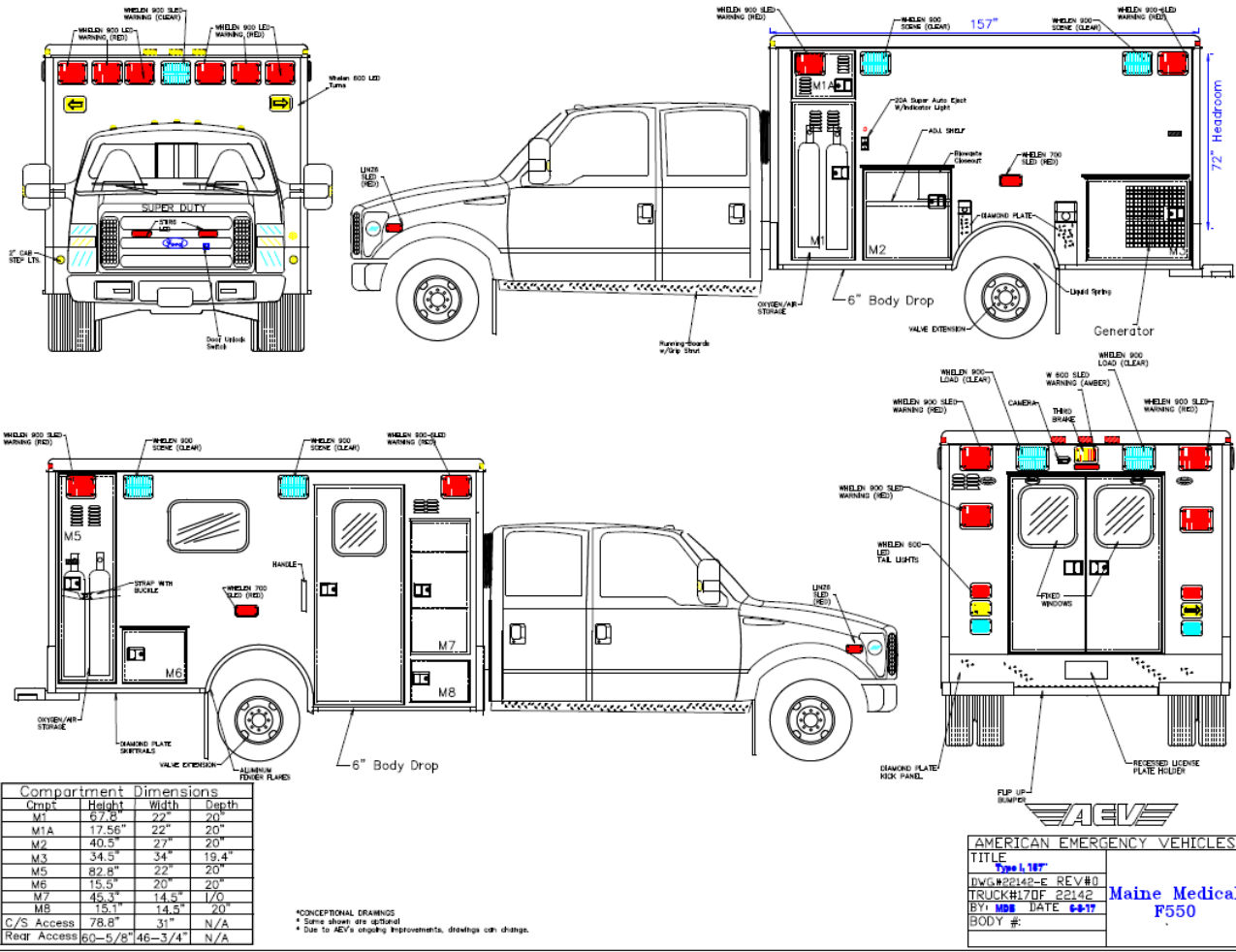




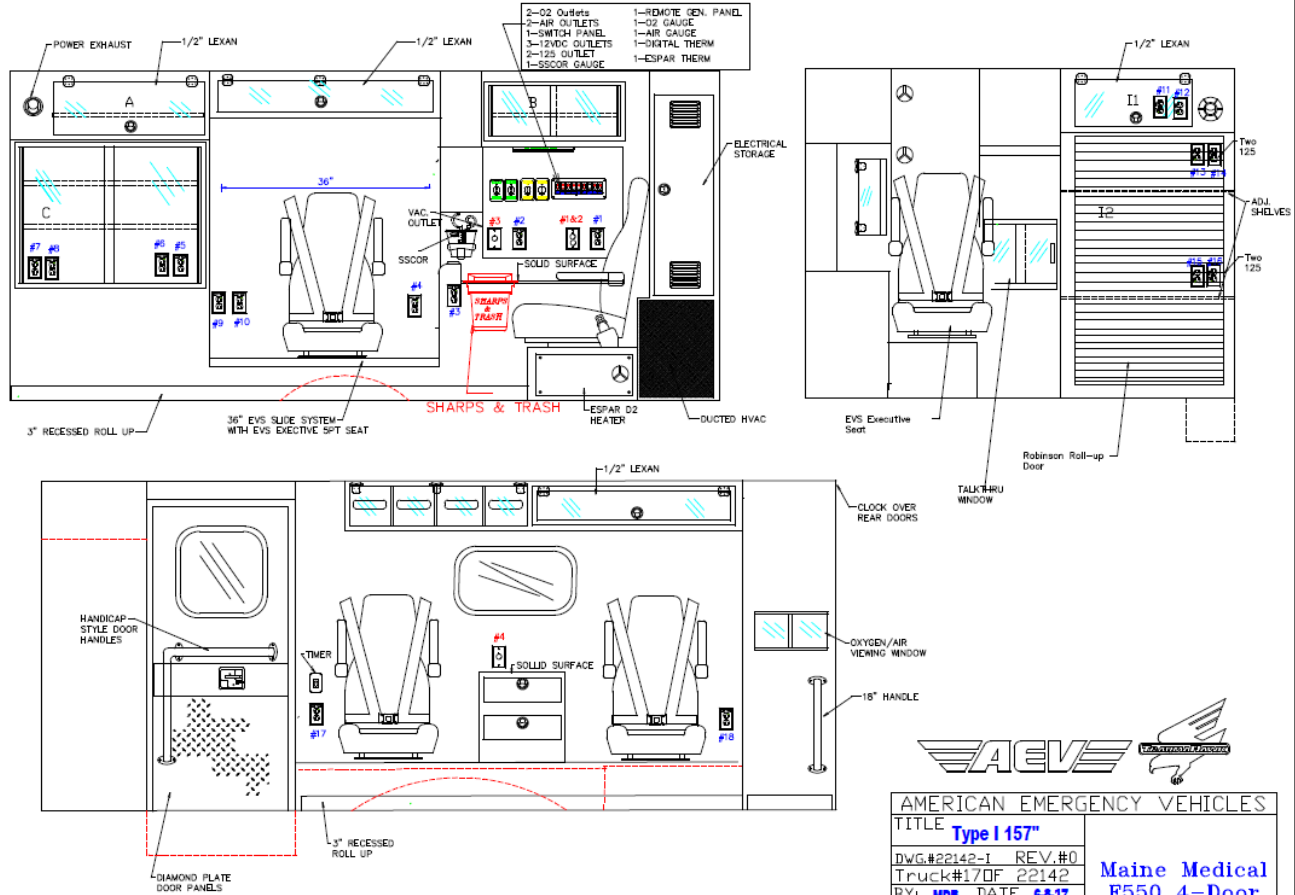
AEVE



CONCEPTIONAL DRAWINGS ONLY: DRAWINGS ARE NOT TO SCALE, ALL MEASURES ARE APPROXIMATE & SUBJECT TO ENGINEERING CHANGE



CONCEPTIONAL DRAWINGS ONLY: DRAWINGS ARE NOT TO SCALE, ALL MEASURES ARE APPROXIMATE & SUBJECT TO ENGINEERING CHANGE



*CONCEPTIONAL DRAWINGS
 * Some shown are optional
 * Due to AEV's ongoing improvements, drawings can change.

AMERICAN EMERGENCY VEHICLES	
TITLE Type I 157"	
DWG.#22142-I	REV.#0
Truck#17DF	22142
BY: MDS	DATE 6-8-17
BDDY #1	
	Maine Medical F550 4-Door





AEVE





AEVE





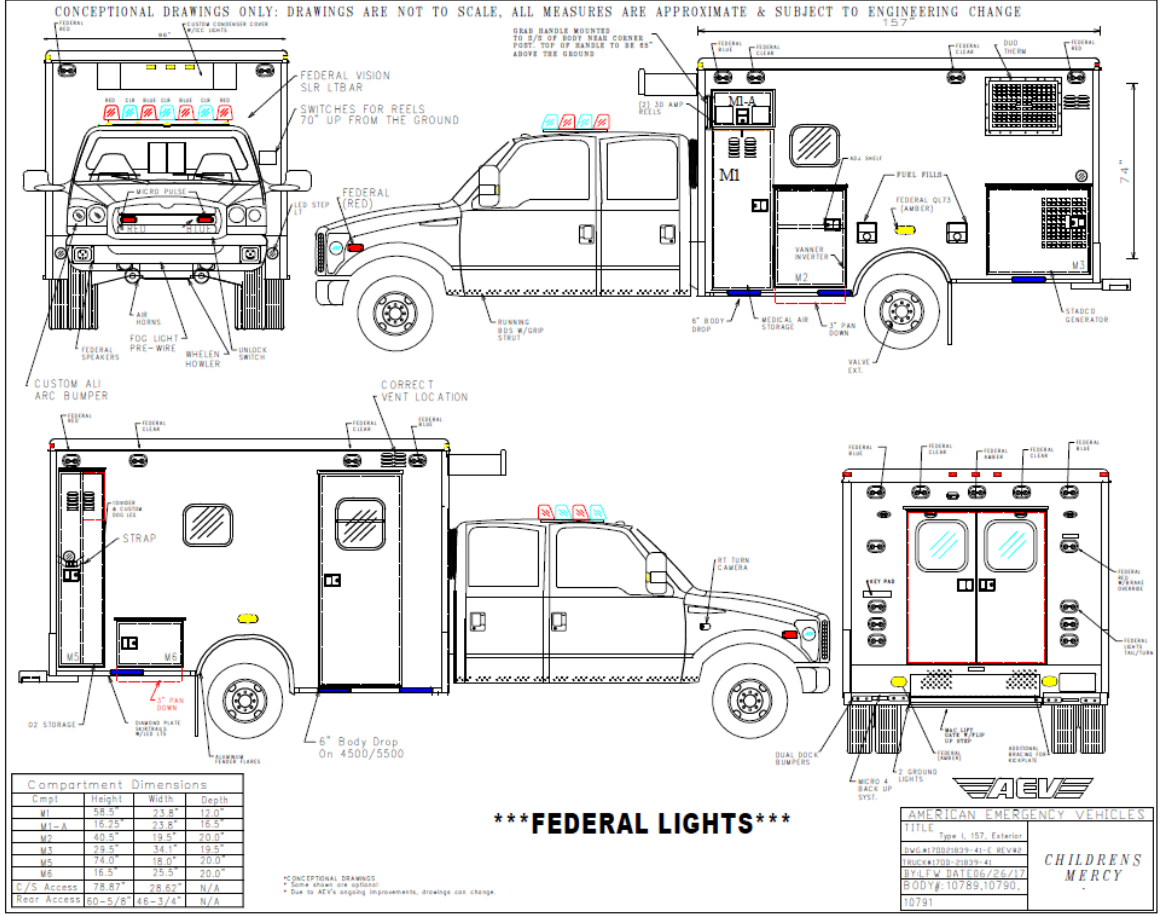
AEVE





AEVE







AEVE





AEVE



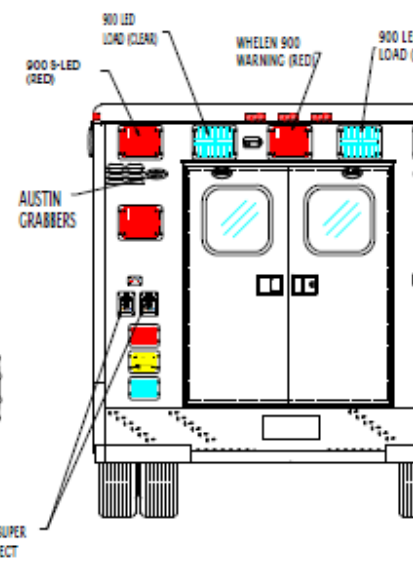
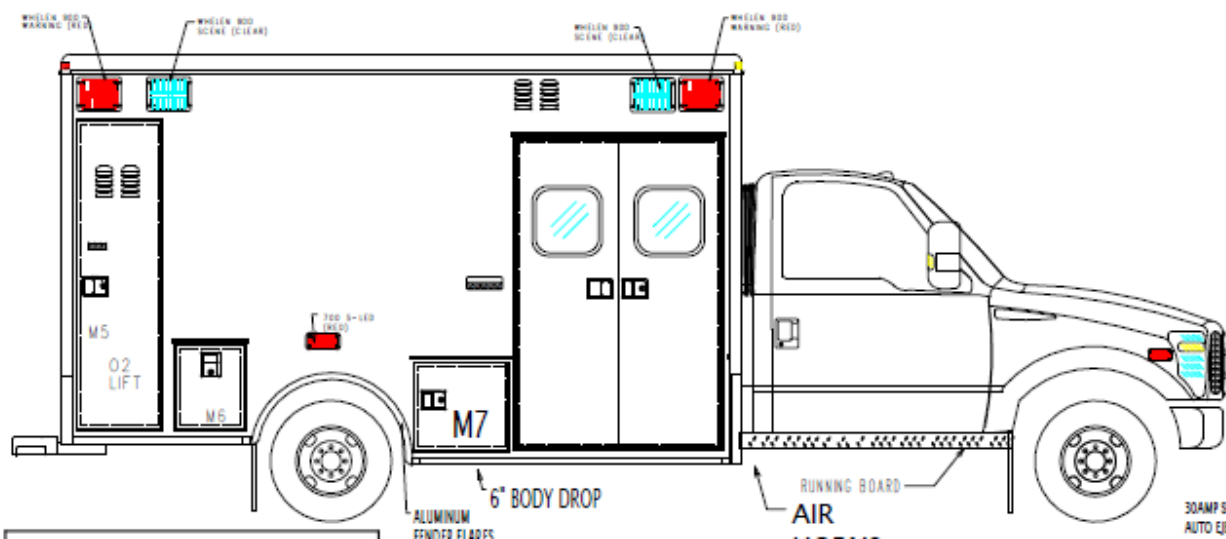
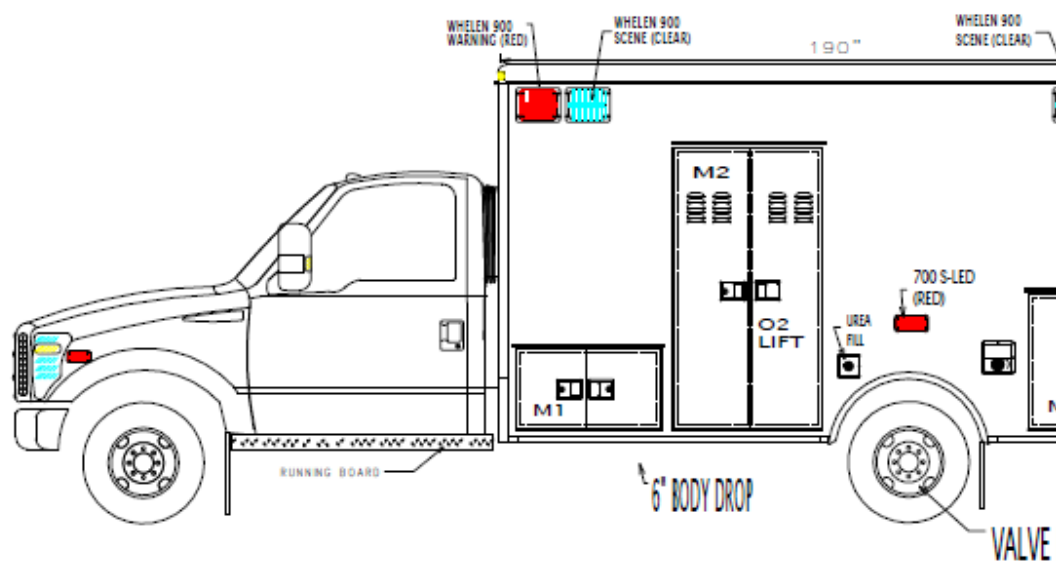
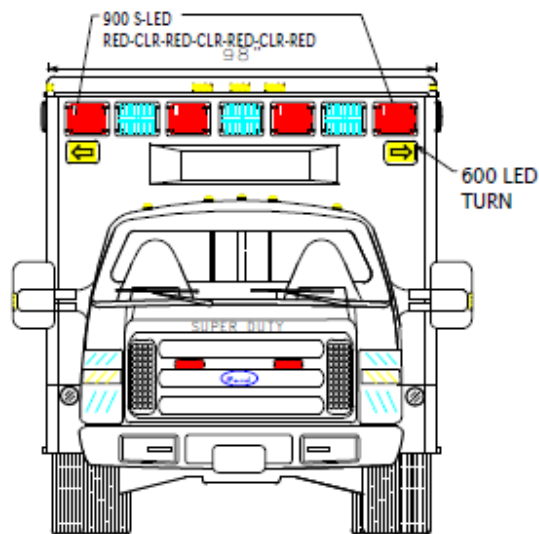


AM 7/56 DEC/18/2018

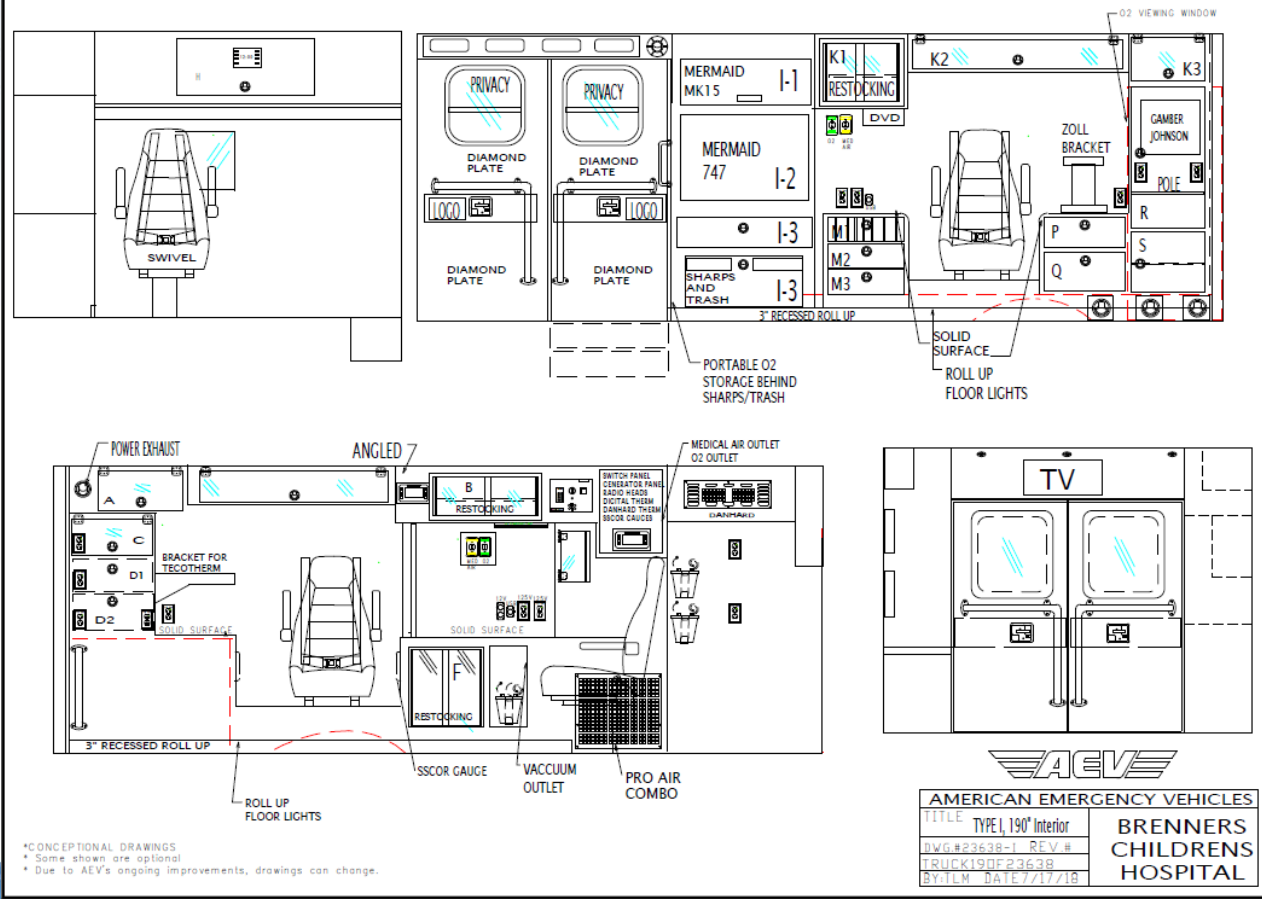
AEVE



CONCEPTIONAL DRAWINGS ONLY: DRAWINGS ARE NOT TO SCALE, ALL MEASURES ARE APPROXIMATE & SUBJECT TO ENGINEERING CHANGE



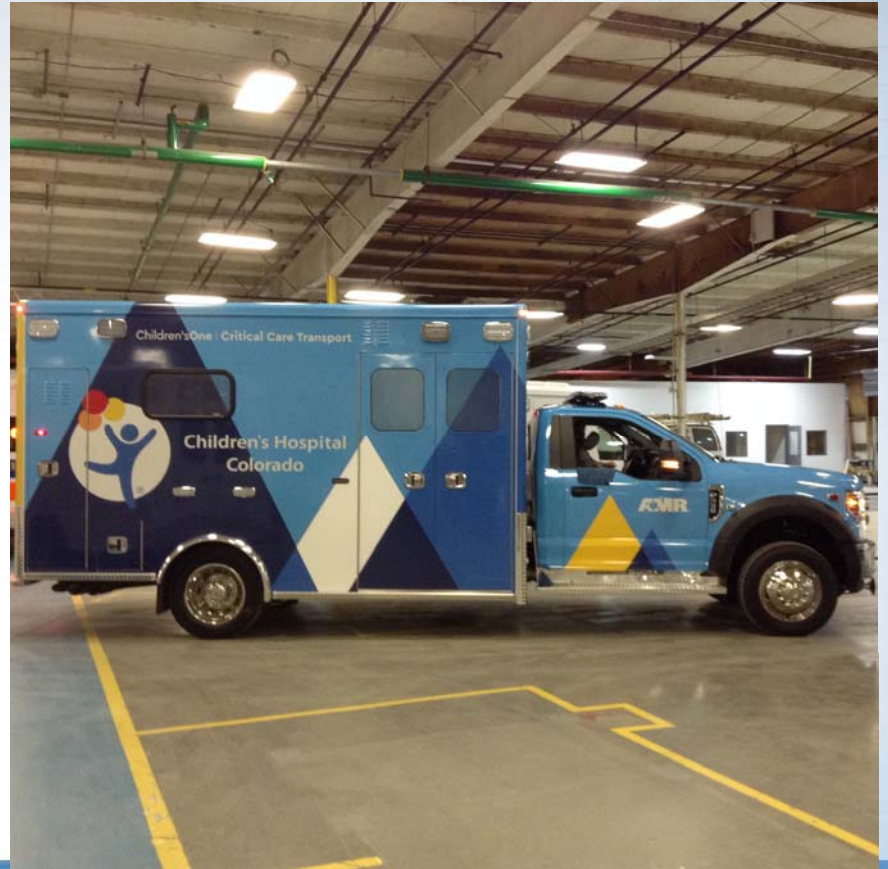
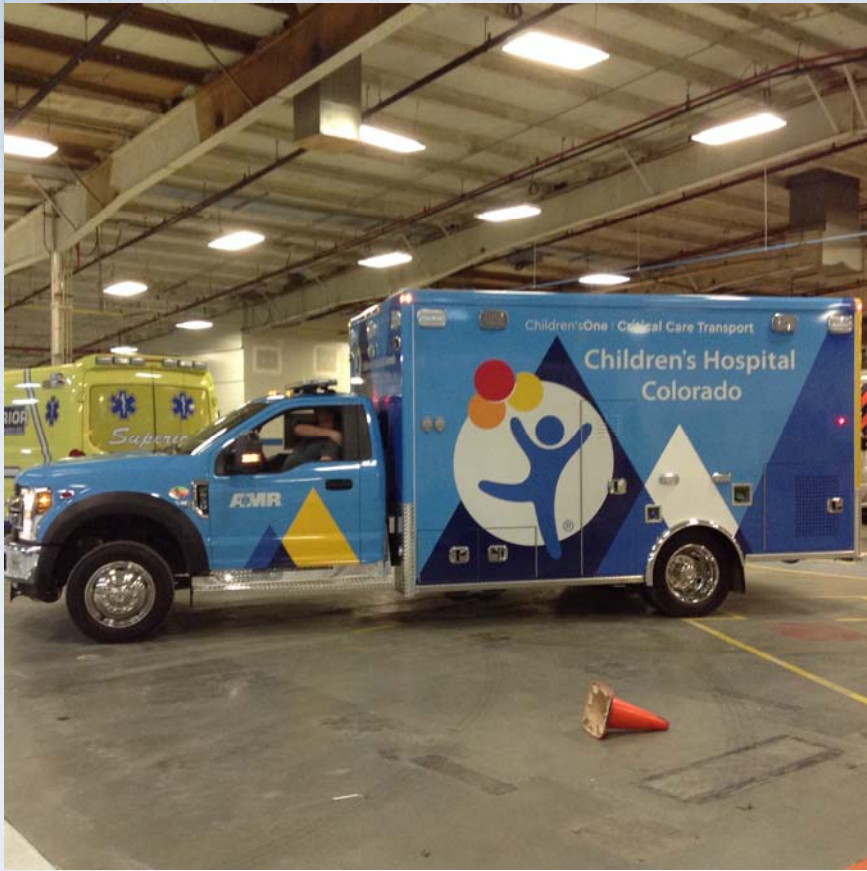
CONCEPTIONAL DRAWINGS ONLY: DRAWINGS ARE NOT TO SCALE, ALL MEASURES ARE APPROXIMATE & SUBJECT TO ENGINEERING CHANGE





AEVE





AEVE





AM10:13 MAR 1/25 '9

AEVE

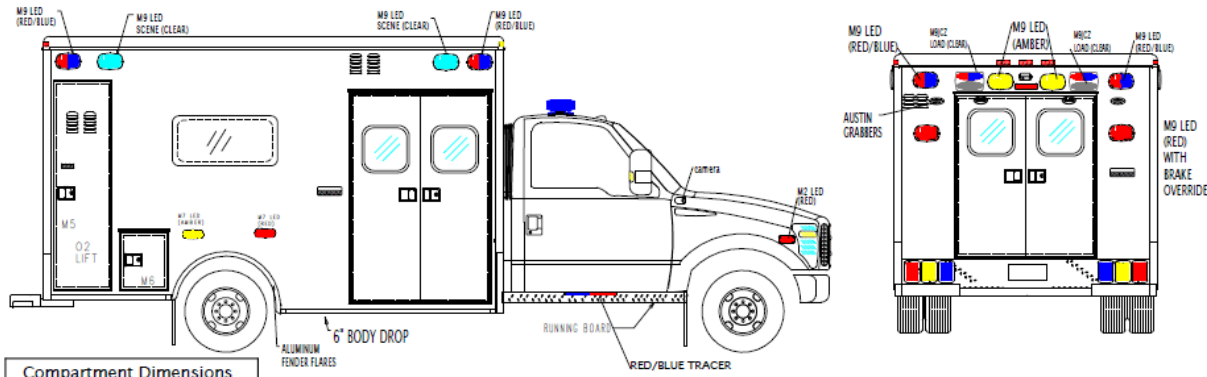
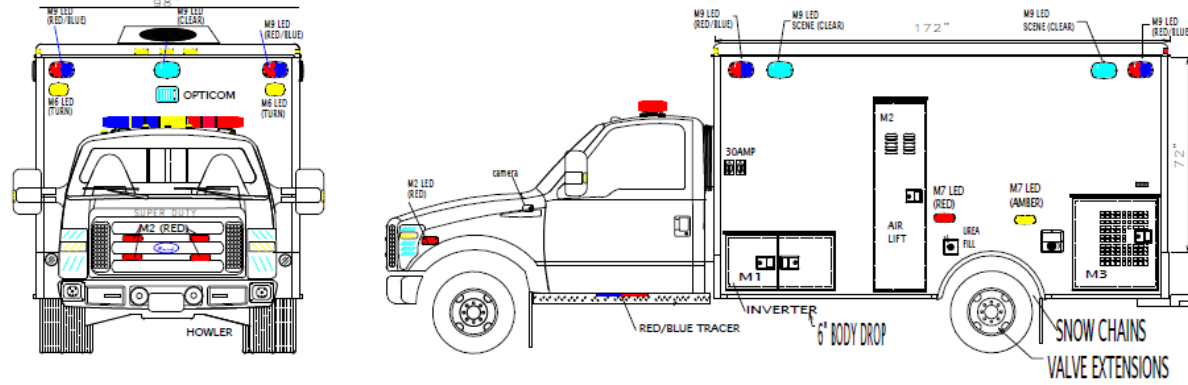




A E V E



CONCEPTUAL DRAWINGS ONLY: DRAWINGS ARE NOT TO SCALE, ALL MEASURES ARE APPROXIMATE & SUBJECT TO ENGINEERING CHANGE



Compartment Dimensions			
Comp	Height	Width	Depth
M1	15.5"	40"	21"
M2	58.5"	18.6"	13"
M3	29.5"	34.2"	19.5"
M5	66"	18.6"	13"
M6	15.5"	13.8"	21"
M7	N/A	N/A	N/A
C/S Access	78.5"	50.75"	N/A
Rear Access	60-5/8"	46-3/4"	N/A

*CONCEPTUAL DRAWINGS
 * Some shown are optional
 * Due to AVE's ongoing improvements, drawings can change.

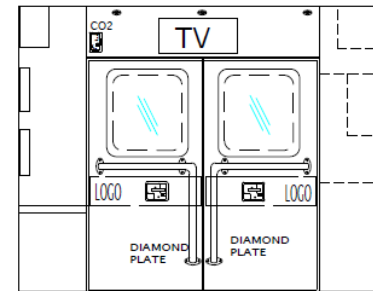
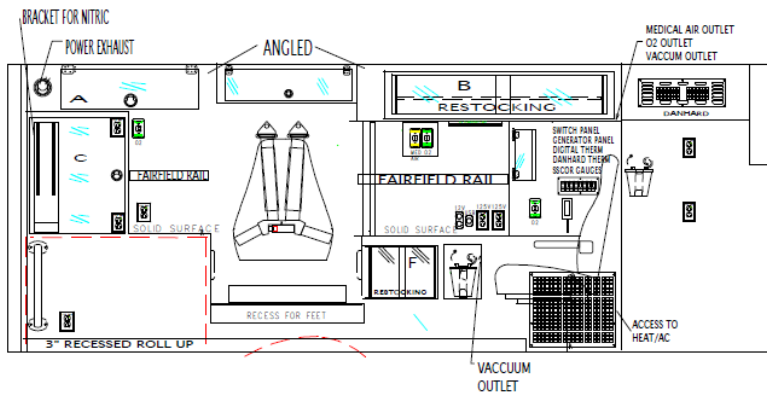
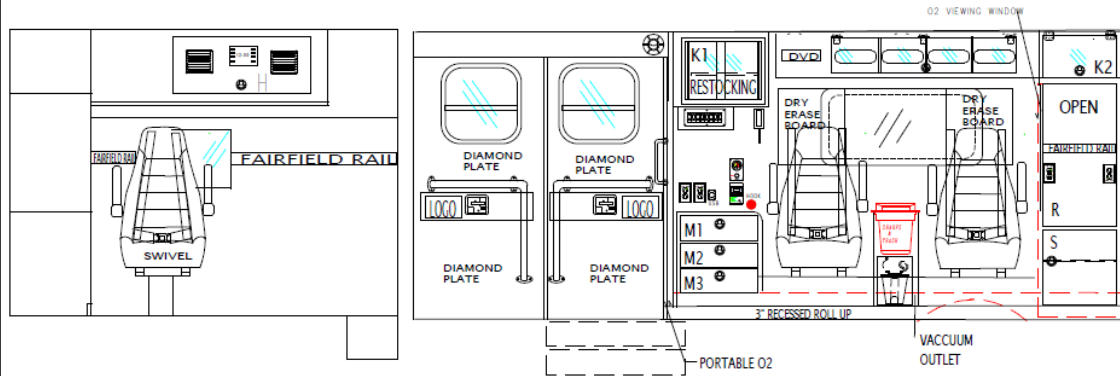


AMERICAN EMERGENCY VEHICLES
 TITLE Type L, 172, Exterior
 DWG #24181-E REV#0
 TRUCK#190F24181-24354
 BY:TLM DATE11/27/18
 BODY #:11808-11881

COLORADO
 CHILDRENS
 HOSPITAL



CONCEPTIONAL DRAWINGS ONLY: DRAWINGS ARE NOT TO SCALE, ALL MEASURES ARE APPROXIMATE & SUBJECT TO ENGINEERING CHANGE



*CONCEPTIONAL DRAWINGS
 • Some shown are optional
 • Due to AEV's ongoing improvements, drawings can change.



AMERICAN EMERGENCY VEHICLES	
TITLE	TYPE I, 172" Interior
DWG.#24181-1	REV #
TRUCK#24181	
BY:TLM	DATE:10/15/10
COLORADO CHILDRENS HOSPITAL	





AEVE





AEVE





AEVE

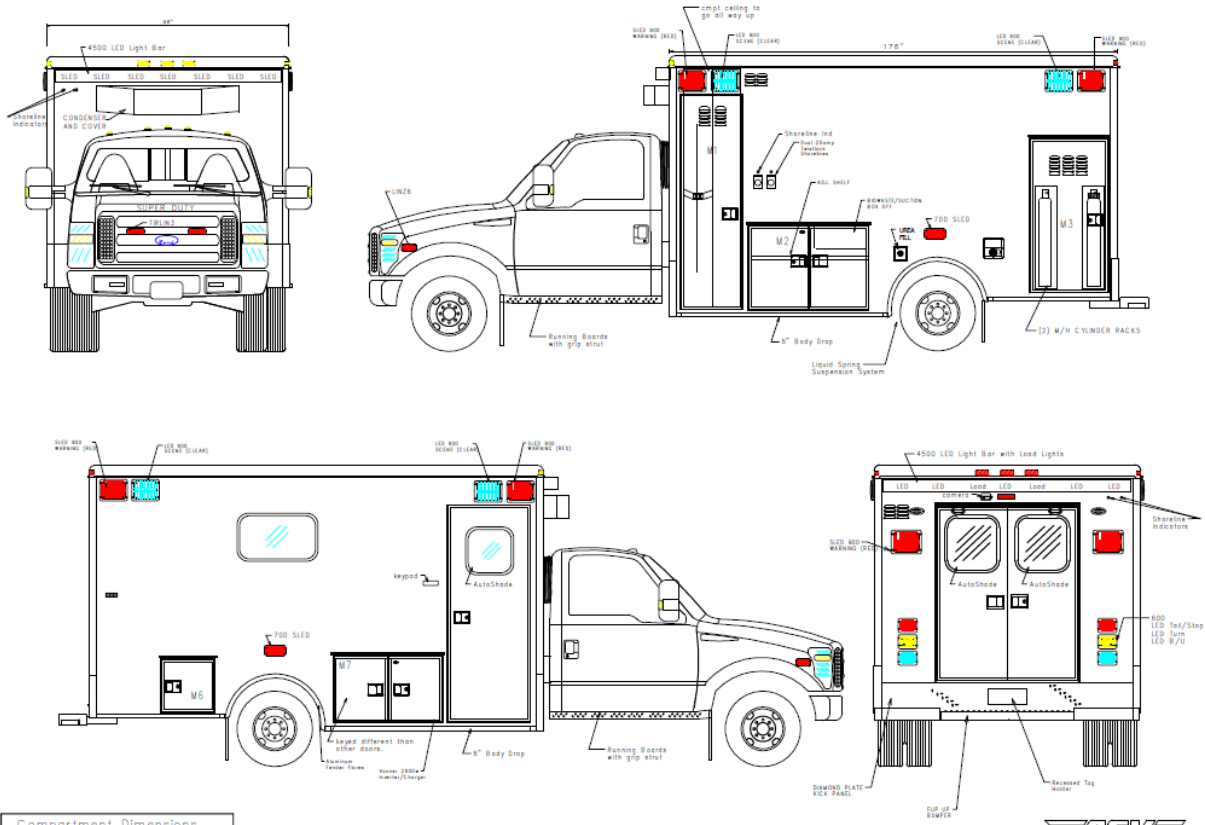




AEVE




CONCEPTUAL DRAWINGS ONLY: DRAWINGS ARE NOT TO SCALE, ALL MEASURES ARE APPROXIMATE & SUBJECT TO ENGINEERING CHANGE



Compartment Dimensions			
Comp	Height	Width	Depth
M1	76.81"	26.5"	21"
M2	40.5"	16.375"	19.4"
M3	60"	31"	12"
M4	19.5"	19"	19.4"
M7	20"	41"	19.4"
M5	N/A	N/A	N/A
O/S Access	78.81"	31"	N/A
Rear Access	60-5/8"	45-3/4"	N/A

*CONCEPTUAL DRAWINGS
 • Some values are optional
 • Due to A/E/V's ongoing improvements, drawings can change.

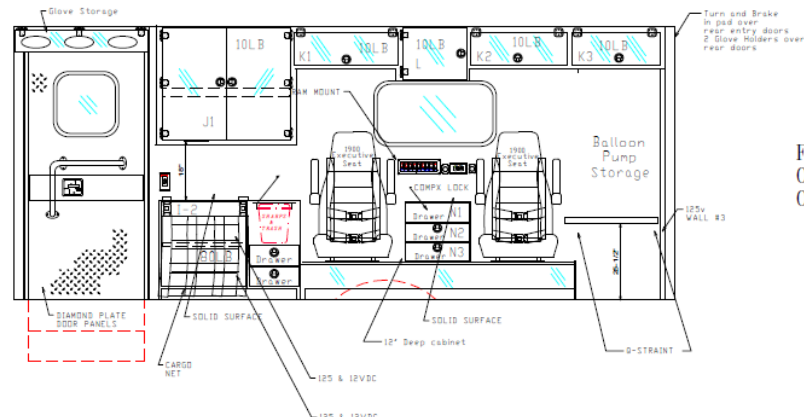
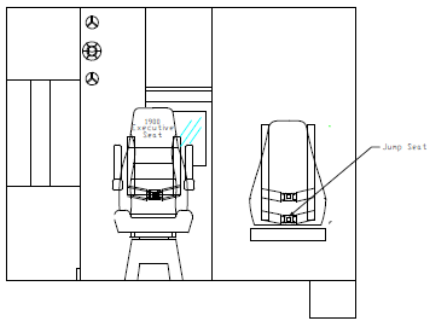
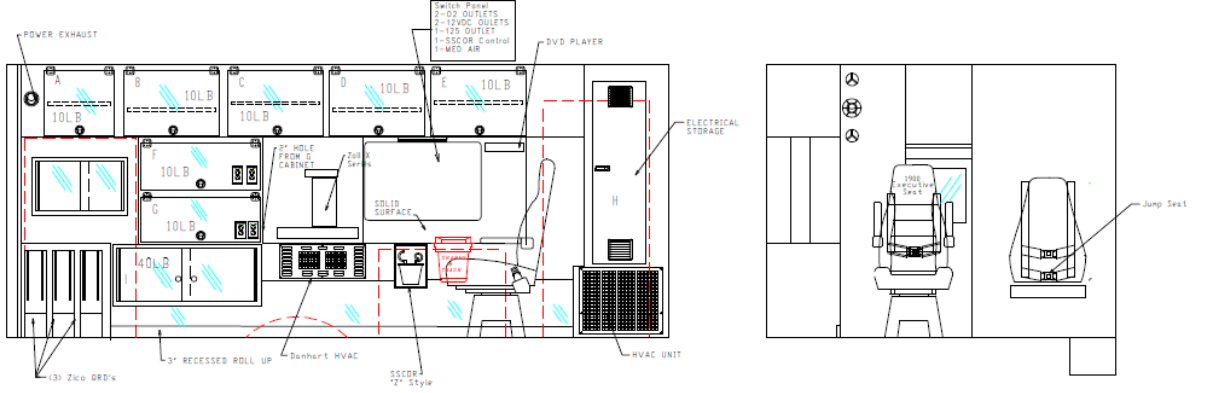
AEVE
 AMERICAN EMERGENCY VEHICLES
 TITLE: Type 6, 176, Exterior
 DWG #101: 01/17/20
 TRUCK #170F22561
 BY: JCL BATES-23-17
 BODY #: 11100



John's Hopkins



CONCEPT DRAWINGS ONLY: DRAWINGS ARE NOT TO SCALE, ALL MEASURES ARE APPROXIMATE & SUBJECT TO ENGINEERING CHANGE



FOOTMAN LOOP SECURITY
ON ALL CABINETS W/EXCEPTION
OF CABINETS "F & G"

*CONCEPTUAL DRAWINGS
• Some shown are optional
• Due to AEV's ongoing improvements, drawings can change.



AMERICAN EMERGENCY VEHICLES	
TITLE	F350 176" Interior
DWG.#/INT	REV.#
TRUCK#	170F22561
BY/JBC	DATE 8-23-17



John's Hopkins





AEVE





AEVE





AEVE

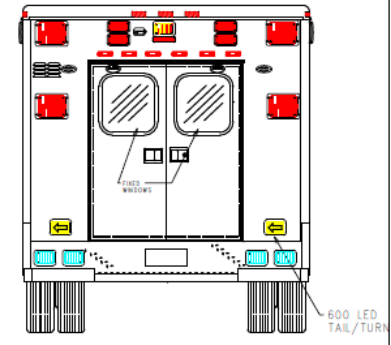
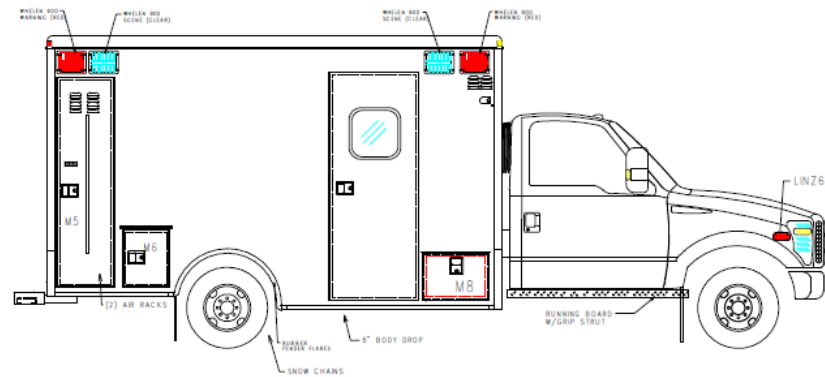
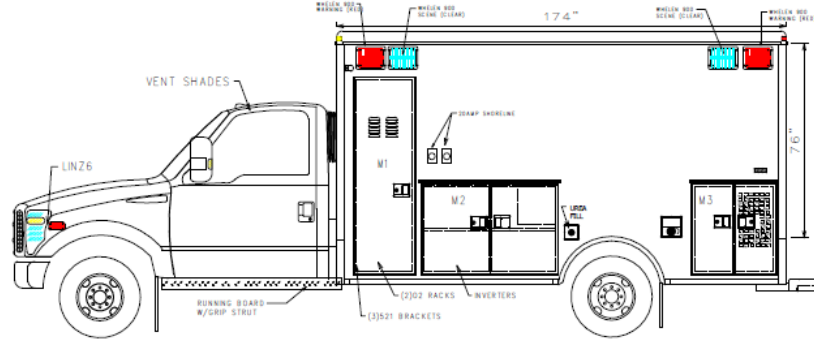
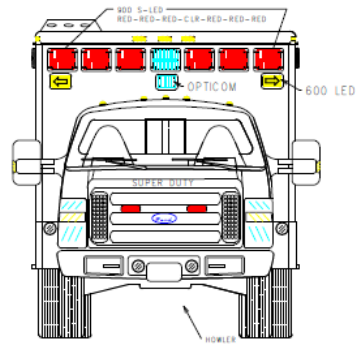




AEVE



CONCEPTIONAL DRAWINGS ONLY: DRAWINGS ARE NOT TO SCALE, ALL MEASURES ARE APPROXIMATE & SUBJECT TO ENGINEERING CHANGE



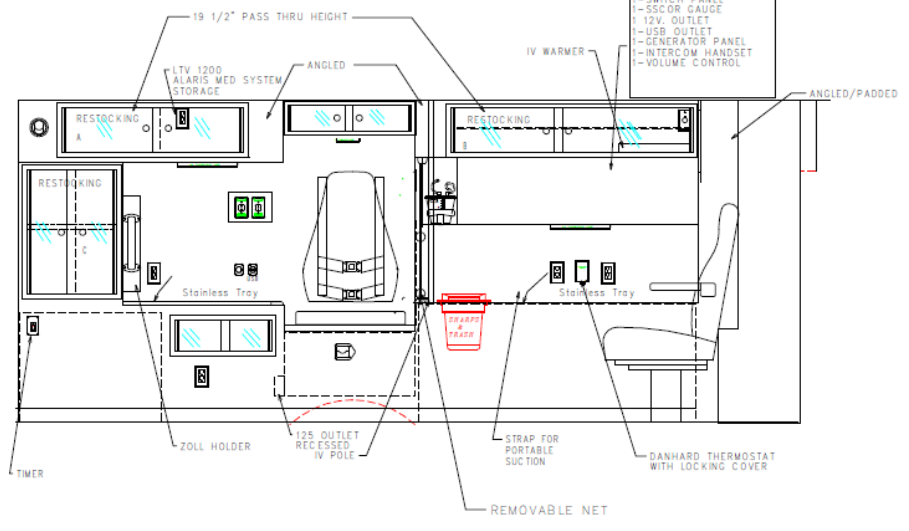
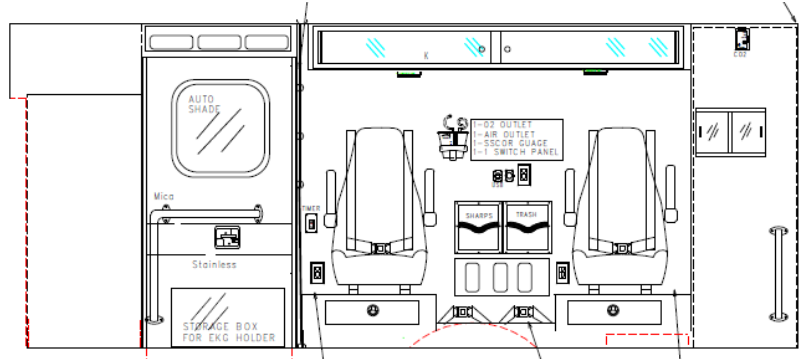
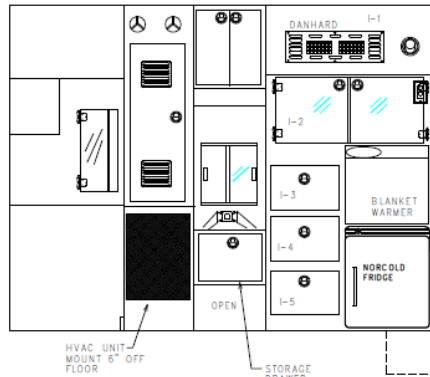
Compartment Dimensions			
Comp	Height	Width	Depth
M1	74"	22.1"	15.5"
M2	34.5"	43"	19.5"
M3	34.5"	35.6"	19.4"
M4	74"	25.6"	21"
M6	14"	10.4"	10.5"
M7	N/A	N/A	N/A
M8	15.25"	18.5"	N/A
C/S Access	83.9"	91"	N/A
Rear Access	62-5/8"	48-3/4"	N/A

*CONCEPTIONAL DRAWINGS
 * Some items are optional
 * Due to AEV's ongoing improvements, drawings can change




AMERICAN EMERGENCY VEHICLES
 TITLE Type L 172 Exterior
 VIN# 2P2P28-0 RFV80
 TRUCK# 16DF00228-30
 BUIL# DAILE/14715
 BODY # 9937-9942-3749
 CHILDREN'S HOSPITAL OF PHILADELPHIA





- 12V. OUTLET
- AIR OUTLET
- SWITCH PANEL
- SCOR GAUGE
- 12V. OUTLET
- USB OUTLET
- GENERATOR PANEL
- INTERCOM HANDSET
- VOLUME CONTROL



TITLE	INTERIOR	
	TYPE	I CUSTOM
BWG #2022R-1	REV #	
TRUCKRISE/2022R-3D		
BY: TLM	DATE	12/14/15
		 CHILDRENS HOSPITAL OF PHILADELPHIA





AEVE





AEVE





25/05/2016 17:24

AEVE

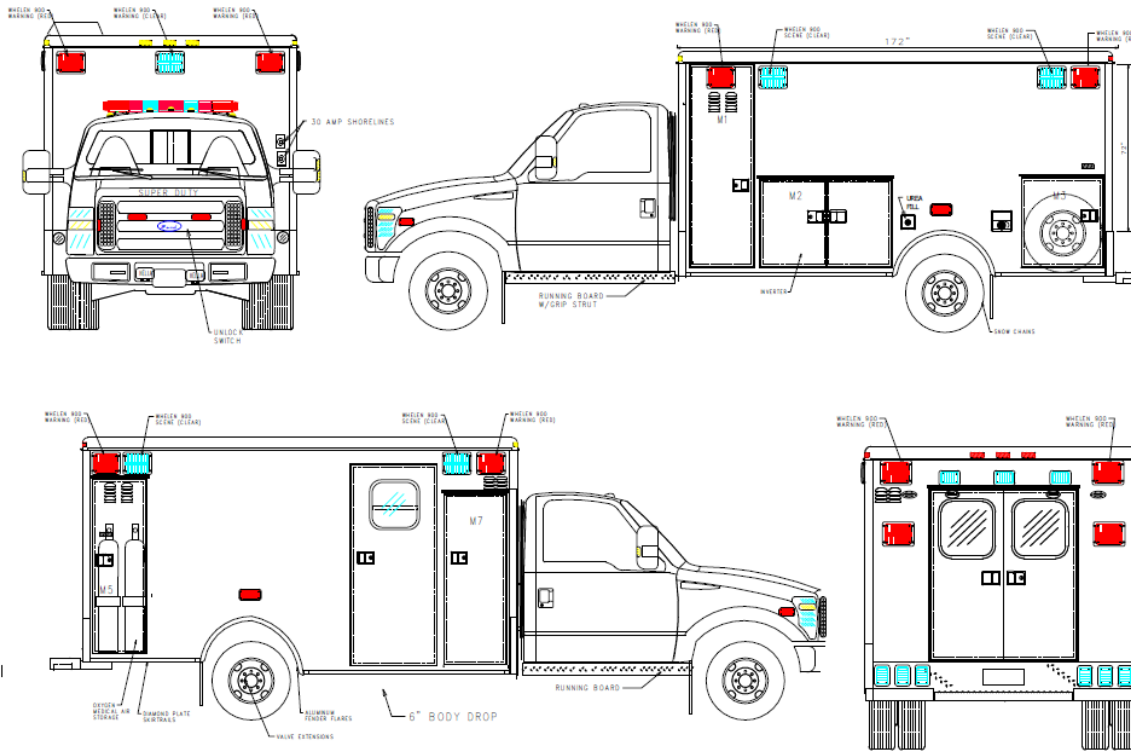




AEVE



CONCEPTUAL DRAWINGS ONLY: DRAWINGS ARE NOT TO SCALE, ALL MEASURES ARE APPROXIMATE & SUBJECT TO ENGINEERING CHANGE



Compartment Dimensions			
Comp	Height	Width	Depth
M1	82.5"	22.1"	19.5"
M2	34.5"	5.1"	19.5"
M3	34.5"	15.6"	19.5"
M4	55"	30"	19"
M6	N/A	N/A	N/A
M7	87.5"	25.25"	N/A
M8	N/A	N/A	N/A
C/S Access	82.8"	31"	N/A
Rear Access	80-5/8"	46-3/4"	N/A

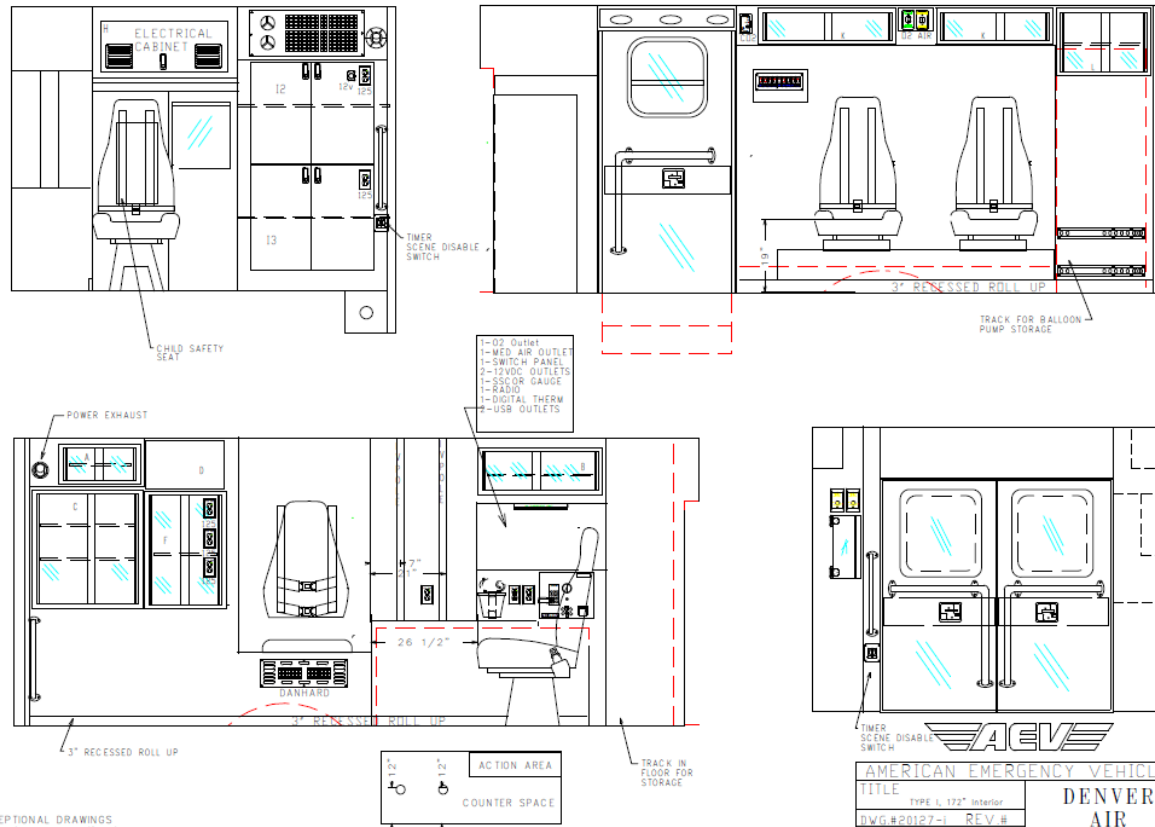
*CONCEPTUAL DRAWINGS
 • Some items are optional
 • Due to AEMV ongoing improvements, drawings can change.



AMERICAN EMERGENCY VEHICLES	
TITLE	Type 1, 172 - Exterior
SWG#	20127-C REV 4.0
TRUCK#	160F20127
BY/ILM	BATE/20/15
BODY #	9965
	AIRLIFE DENVER



CONCEPTUAL DRAWINGS ONLY: DRAWINGS ARE NOT TO SCALE, ALL MEASURES ARE APPROXIMATE & SUBJECT TO ENGINEERING CHANGE



*CONCEPTUAL DRAWINGS
 * Some shown are optional
 * Due to AEV's ongoing improvements, drawings can change.

AMERICAN EMERGENCY VEHICLES	
TITLE	TYPE L, 172" Interior
DWG.#20127-1	REV.#
TRUCK#160F20127	
BY:ILM	DATE:8/10/15
DENVER AIR LIFE	





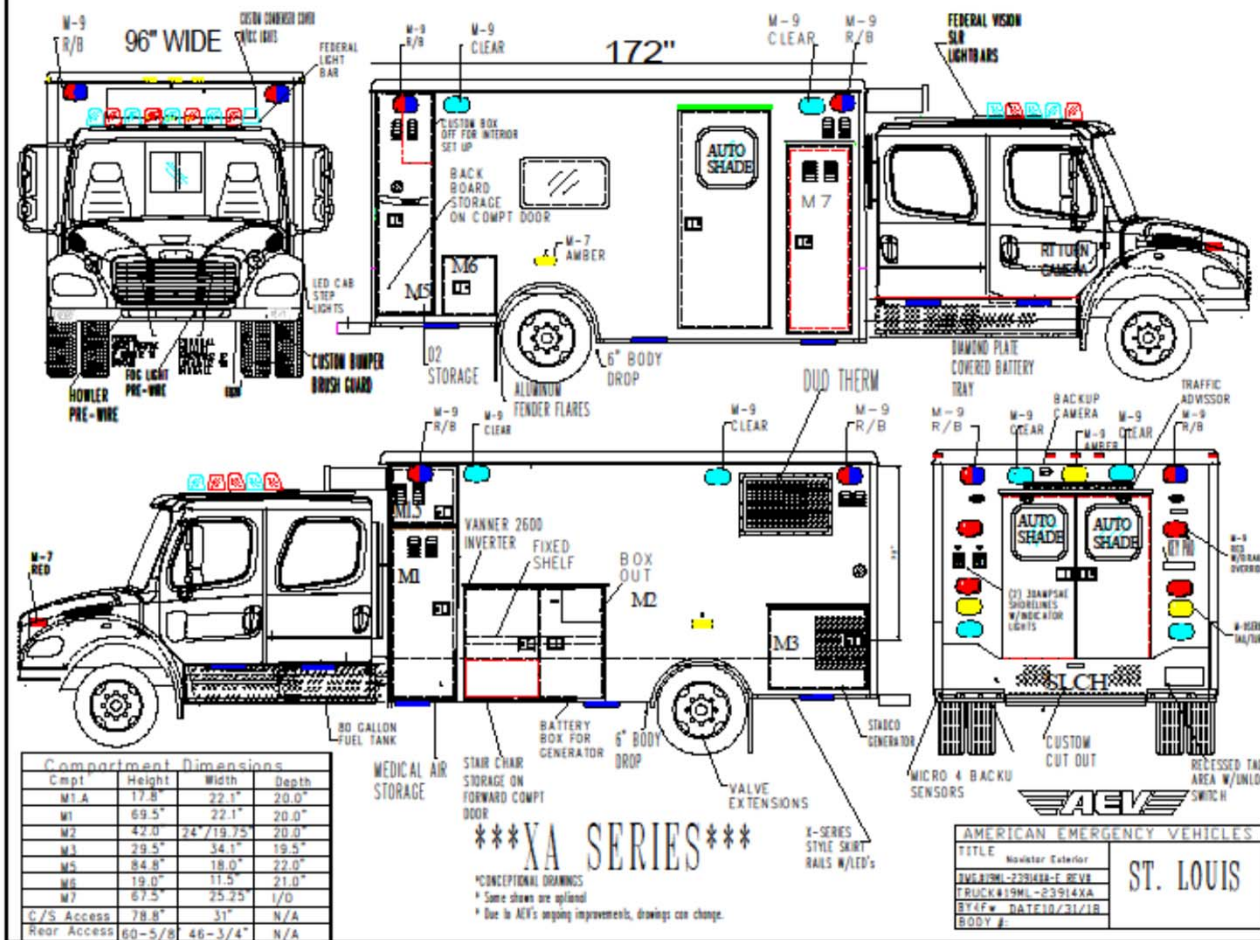




AEVE



CONCEPTIONAL DRAWINGS ONLY: DRAWINGS ARE NOT TO SCALE. ALL MEASURES ARE APPROXIMATE & SUBJECT TO ENGINEERING CHANGE



Compartment Dimensions			
Comp	Height	Width	Depth
M1A	17.8"	22.1"	20.0"
M1	69.5"	22.1"	20.0"
M2	42.0"	24.7/19.75"	20.0"
M3	29.5"	34.1"	19.5"
M4	84.8"	18.0"	22.0"
M5	19.0"	11.5"	21.0"
M6	67.5"	25.25"	17.0"
C/S Access	78.8"	31"	N/A
Rear Access	60-5/8"	46-3/4"	N/A

XA SERIES

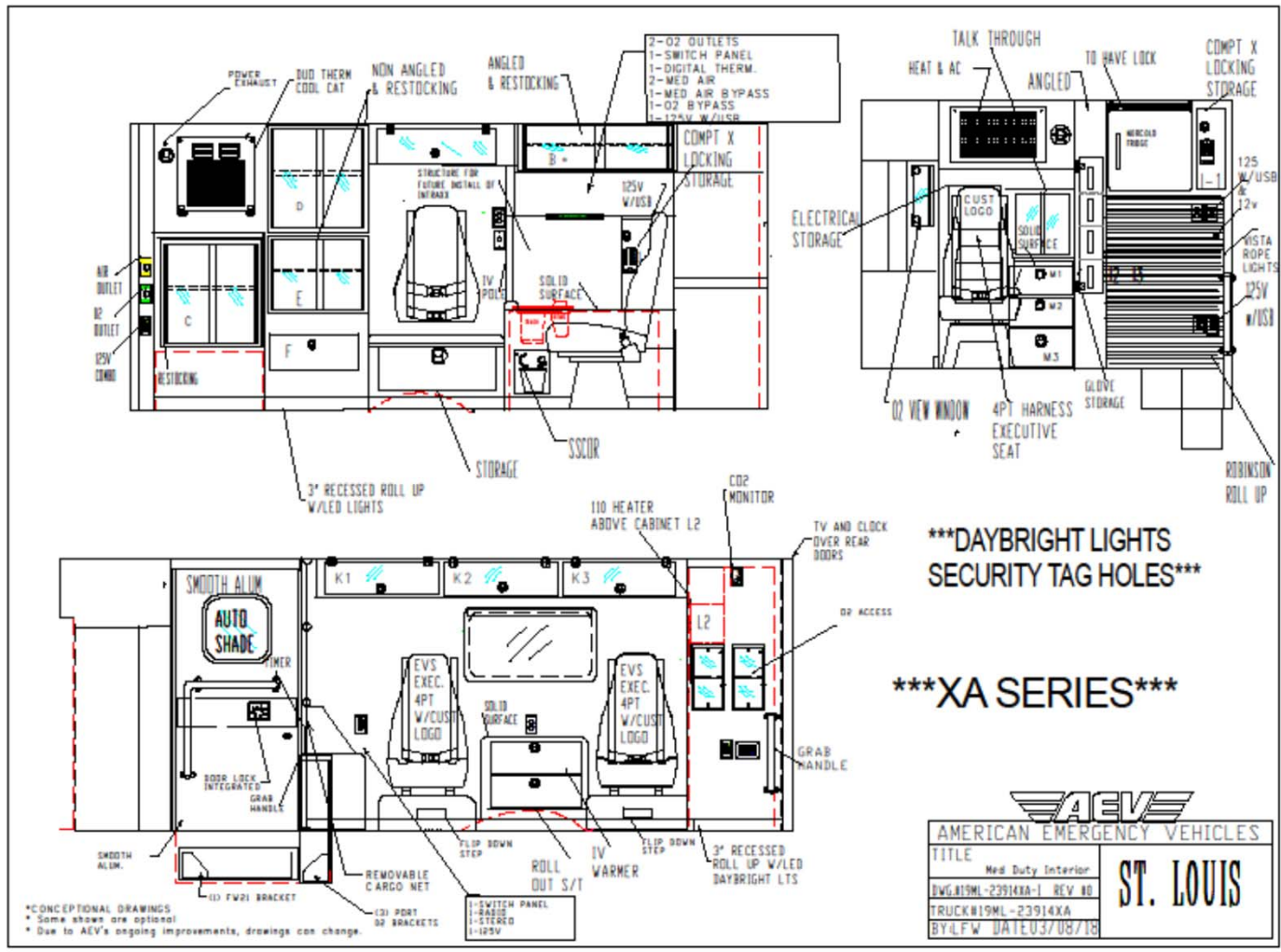
*CONCEPTIONAL DRAWINGS
* Some shown are optional
* Due to AEMV's ongoing improvements, drawings can change.

X-SERIES
STYLE SKIRT
RAILS W/LED'S

AMERICAN EMERGENCY VEHICLES

TITLE	Novelator Exterior	ST. LOUIS
INTEGRAL	2701AA-F BEVE	
TRUCK#	19ML-23914XA	
BY	DATE 10/31/18	
BODY #		

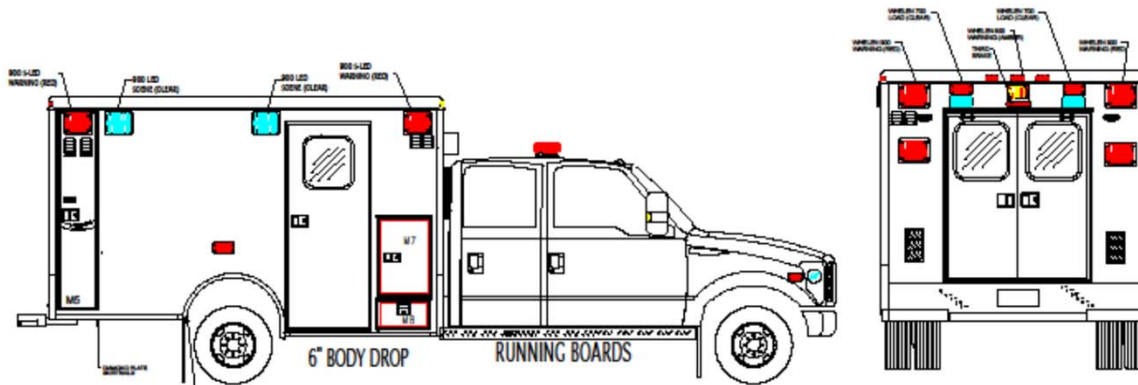
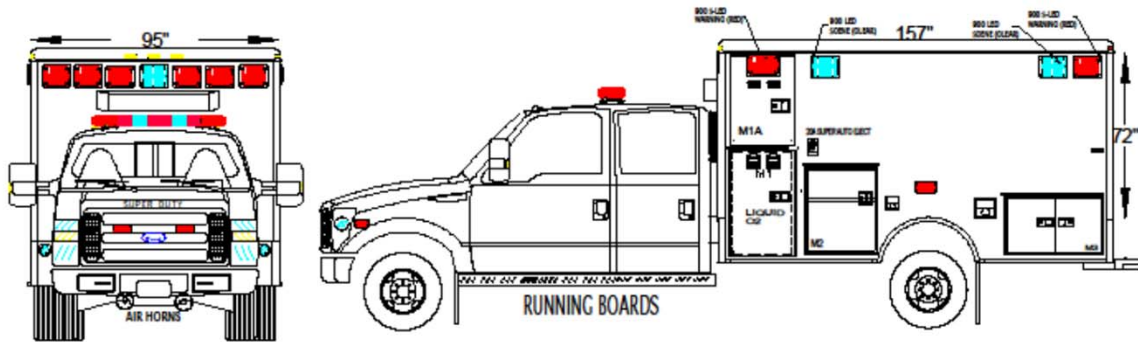




AEV	
AMERICAN EMERGENCY VEHICLES	
TITLE	ST. LOUIS
Med Duty Interior	
DWG#19ML-23914XA-1 REV #0	
TRUCK#19ML-23914XA	
BY:LFW DATE:03/08/18	



CONCEPTUAL DRAWINGS ONLY. DRAWINGS ARE NOT TO SCALE, ALL MEASURES ARE APPROXIMATE & SUBJECT TO ENGINEERING CHANGE



Compartment Dimensions			
Comp	Height	Width	Depth
M1	43.5"	24"	21"
M1A	38.5"	24"	20"
M2	34.5"	24"	21"
M3	15.5"	20"	17.5"
M4	50.5"	11"	17.5"
M5	75"	N/A	N/A
M7	20"	17"	N/A
M8	15.5"	11"	18.5"
C15 Access	82.5"	31"	N/A
Rear Access	80-81"	80-34"	N/A

CONCEPTUAL DRAWINGS
 *Dimensions are approximate
 †Due to utility, equipment, changes, etc.

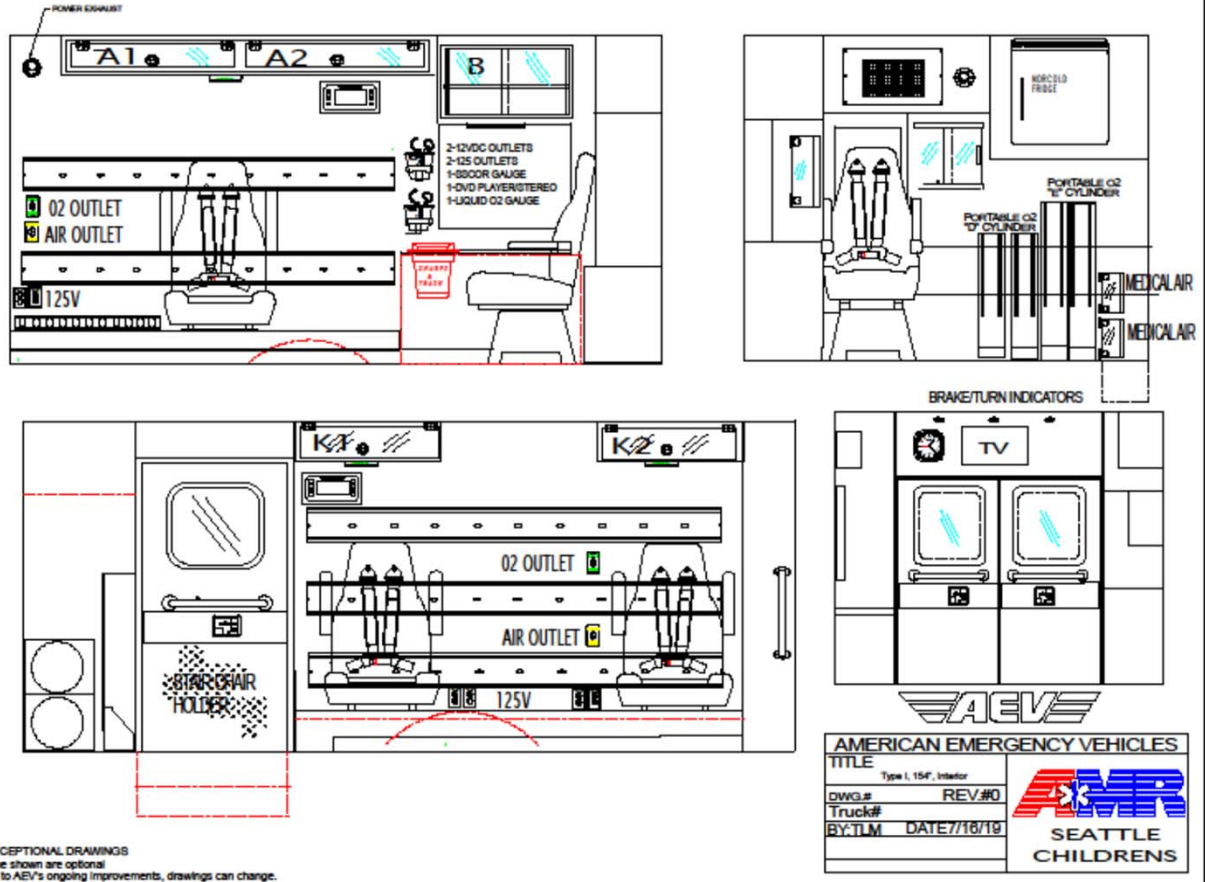
AEVE
 AMERICAN EMERGENCY VEHICLES

TITLE: Trauma Unit
 CHG: 2015-10-19 REV: 20
 BY: TLM DATE: 11/13/15
 BODY #: 12465-12471

AEVE
 SEATTLE
 CHILDRENS



CONCEPTIONAL DRAWINGS ONLY: DRAWINGS ARE NOT TO SCALE, ALL MEASURES ARE APPROXIMATE & SUBJECT TO ENGINEERING CHANGE



*CONCEPTIONAL DRAWINGS
 * Some shown are optional
 * Due to AEV's ongoing improvements, drawings can change.

