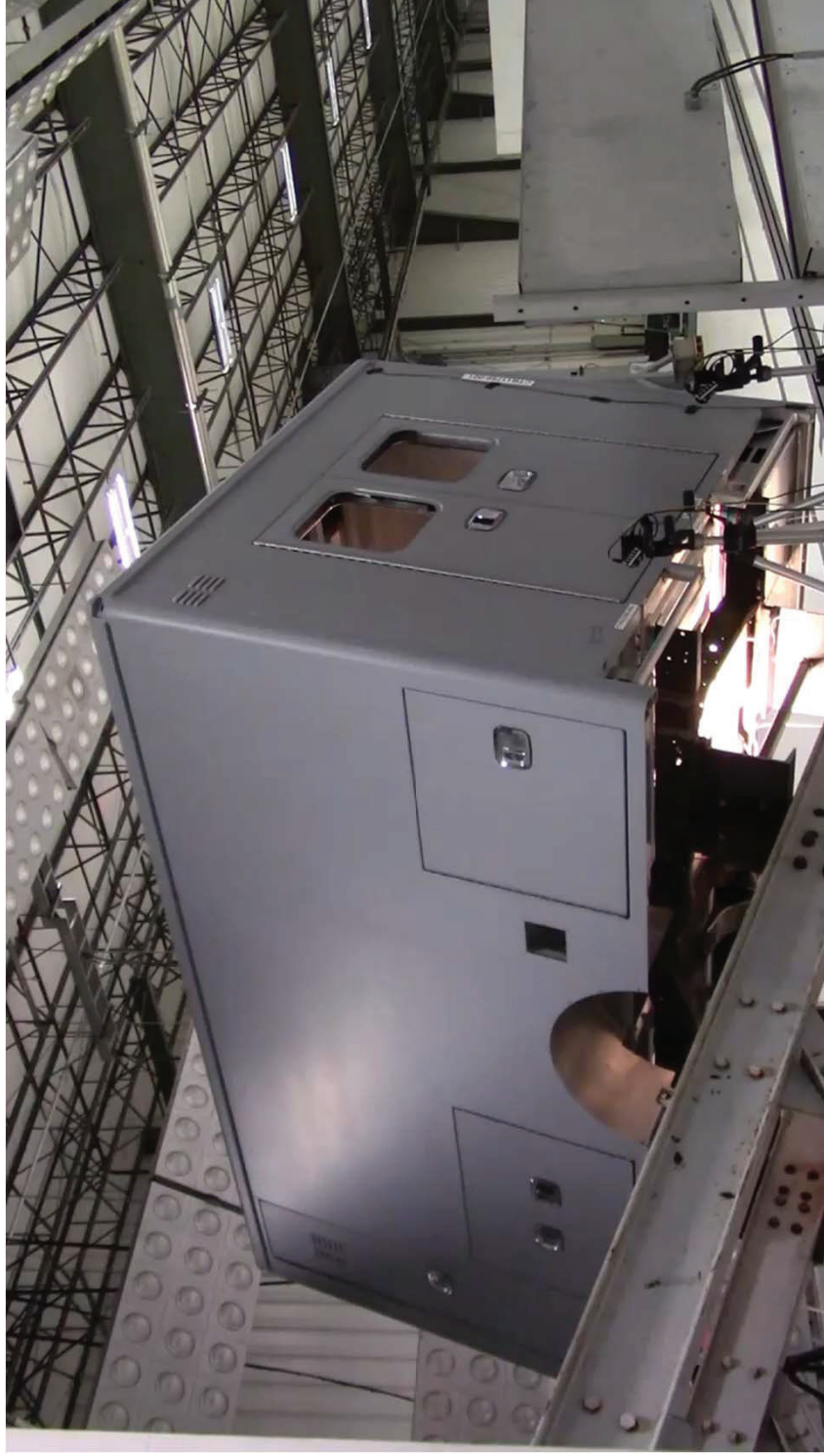


J3057 Dynamic Loading

- No changes needed to the body.



TESTING GEN 8 BODY



J3057 Quasi-Static Loading

- No changes needed to the body.





TESTING GEN 9 BODY



Body Mounted 20° and Struck with 28,000 ft-lbf

TESTING GEN 9 BODY



Left Side Under
Compression

Body mounted of F-Series
chassis frame rails

Right Side in
Tension



TESTING GEN 9 BODY



After a Load of Over 56,000 lbf. reduced load to 21,500 lbf. doors must open

TESTING GEN 9 BODY



Our goal is to take the body to destruction



F-Series Chassis
Frame Rail Failed

TESTING GEN 9 BODY



Why did AEV make changes to our bodies?

AEV is always looking to improve and exceed customer expectations and standards

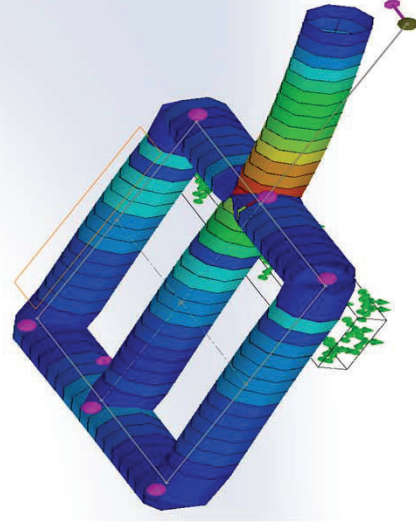
What are the changes to our bodies

Tubing in floor assembly was 1.5" x 3" and 1.5" x 2"

Now all tubing in floor assembly is 2" x 2.5"

Improved floor strength 2.74 times

Added rear wall cross support



Upper board area bending plot

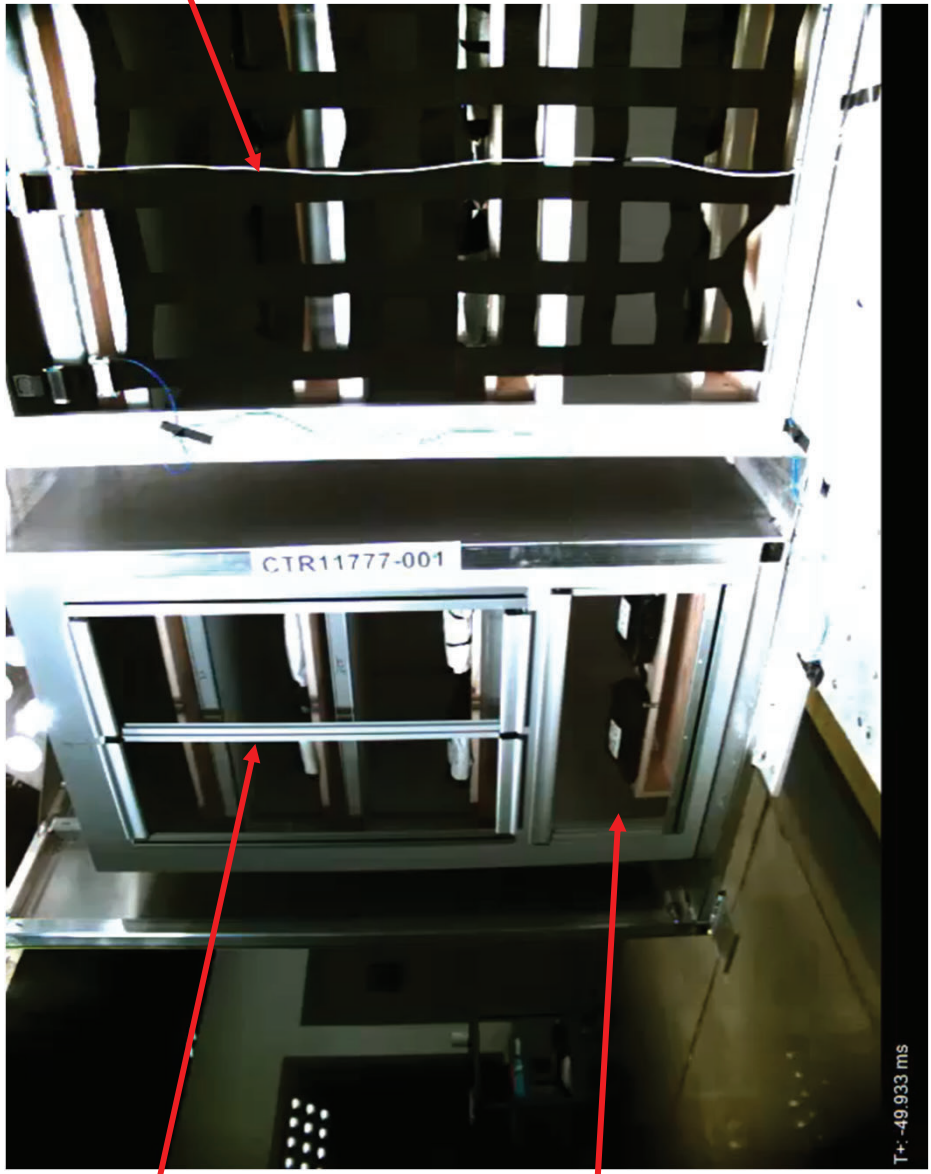


Mickey Truck Bodies replicated the AEV Dynamic Load testing through FEA modeling and verified the FEA through physical testing



TESTING CABINET

J3058 – Ambulance Interior Storage Compartment Integrity J3044



Secure Latch Doors 55 lbs.

Cargo Net

Test for 80 lbs.

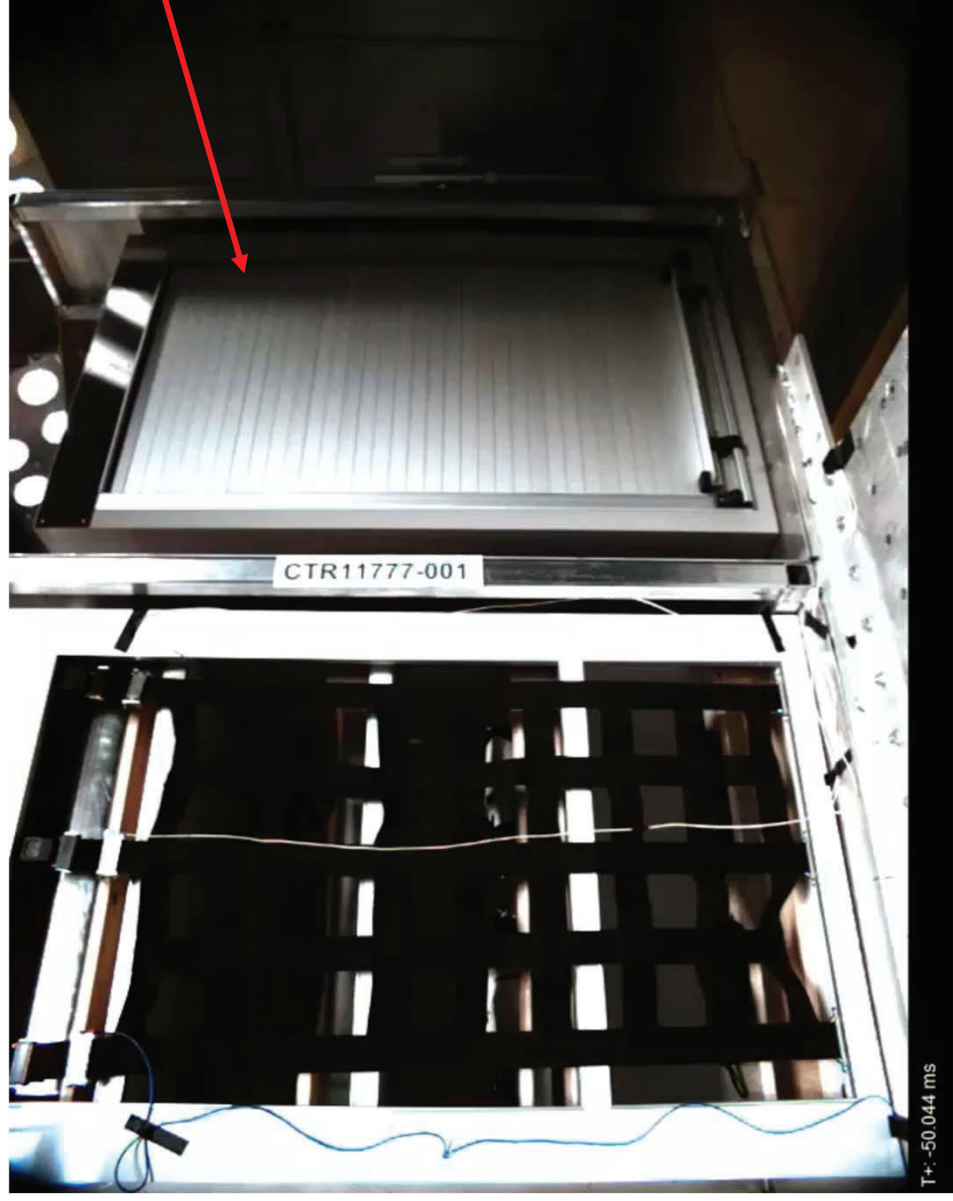
Secure Latch Door 25 lbs.



TESTING CABINET

J3058 – Ambulance Interior Storage Compartment Integrity J3044

Test for
80 lbs.



J3058 – Ambulance Interior Storage Compartment Integrity J2956 (26g)

Second
shot

Test for
80 lbs.



J3026/59 – Seat Occupant Excursion

- J3026 – Ambulance Patient Compartment Seating Integrity and Occupant Restraint
- J3059 – Seated Occupant Excursion



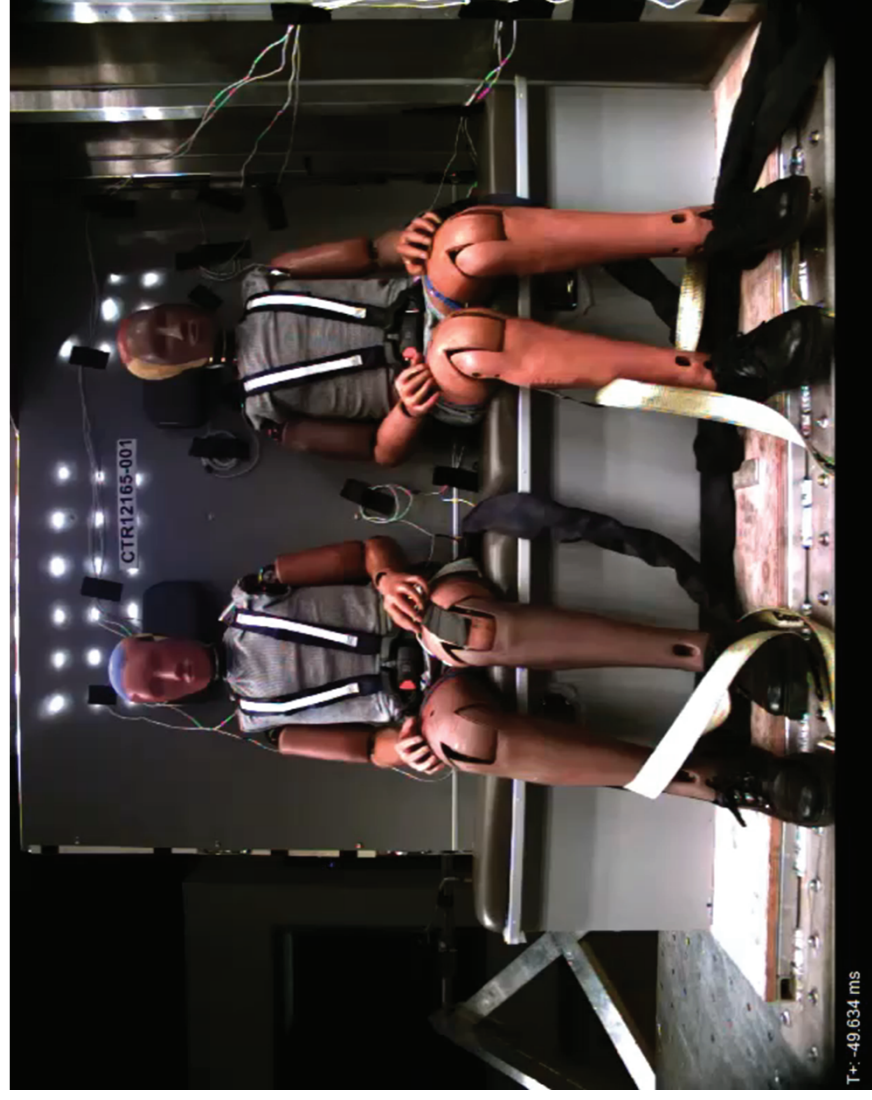
Extended
head pad

TESTING SUB ZERO RESTRAINT SYSTEM



J3026/59 – Seat Occupant Excursion

- J3026 – Ambulance Patient Compartment Seating Integrity and Occupant Restraint
- J3059 – Seated Occupant Excursion



TESTING SUB ZERO RESTRAINT SYSTEM



J3026/59 – Seat Occupant Excursion

- J3026 – Ambulance Patient Compartment Seating Integrity and Occupant Restraint
- J3059 – Seated Occupant Excursion

Testing back rest styles by adding center pad



Changing to one larger back pad and separate head pads

J3102 – Structural Integrity Test to Support J3027 Compliant Cot Mounts J2956



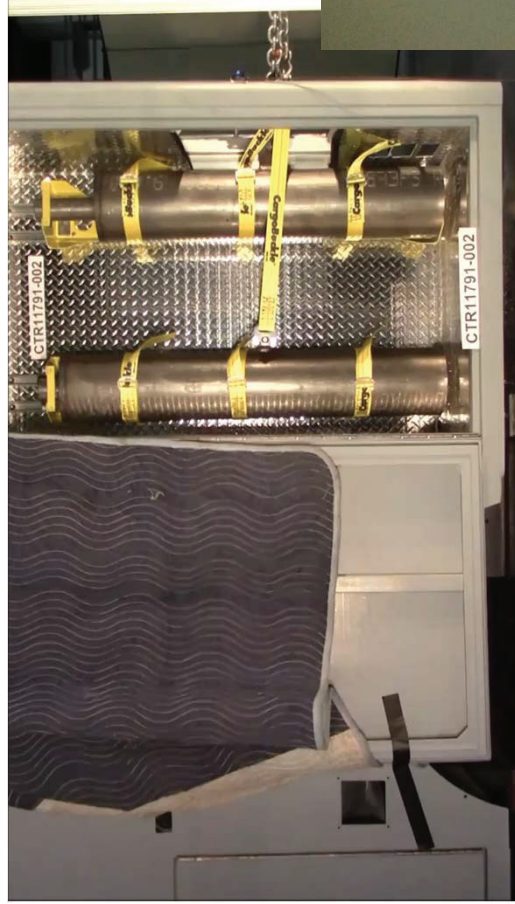
Cot Mounts Testing in Transverse and Normal Orientation

J3102 – Structural Integrity Test to Support J3027 Compliant Cot Mounts J2917



Same Floor Used on All For Sled Runs

J3043 – On Board oxygen Mounts (26 g)



Testing Zico oxygen mounts
and our compartment
mounting

Total load 13,253 lbf.

J3043 – Fire Extinguisher Mounts 5 lb. & 10 lb. (26g)



What does it mean to the dealer/customer?



Secure Latch Windows Frames/Cabinets

- Weight rating stickers will be placed on every cabinet.
- Secure Latch Windows frame extrusions.
- Weight limits on Lever latches and Southco latches
- Secure Latch Lexan doors

Oxygen/Suction

- QR-MV oxygen rack as standard on mods
- Upgraded SSCOR suction bracket standard

Head excursion

- For CPR seat with action area/telemetry area, extended head pad